

Product Name: MYL9 Rabbit Monoclonal Antibody
Catalog #: AMRe21155



Summary

Production Name	MYL9 Rabbit Monoclonal Antibody
Description	Rabbit Monoclonal Antibody
Host	Rabbit
Application	WB,IHC,IF,IP,ELISA
Reactivity	Human,Mouse,Rat

Performance

Conjugation	Unconjugated
Modification	Unmodified
Isotype	IgG,Kappa
Clonality	Monoclonal
Form	Liquid
Storage	Store at 4°C short term. Aliquot and store at -20°C long term. Avoid freeze/thaw cycles.
Buffer	PBS, 50% glycerol, 0.05% Proclin 300, 0.05%BSA
Purification	Protein A

Immunogen

Gene Name	MYL9 MYL9;MLC2;MRLC1;MYRL2;Myosin regulatory light polypeptide 9;20 kDa myosin light chain;LC20;MLC-2C;Myosin RLC;Myosin regulatory light chain 2;smooth muscle isoform;Myosin regulatory light chain 9;Myosin regulatory light chain MRL
Alternative Names	
Gene ID	10398.0
SwissProt ID	P24844.

Application

Dilution Ratio	IHC 1:200-1:1000;WB 1:2000-1:10000;IF 1:200-1:1000;ELISA 1:5000-1:20000;IP 1:50-1:200;
Molecular Weight	Calculated MW:20kD;Observed MW:20kD

Product Name: MYL9 Rabbit Monoclonal Antibody
Catalog #: AMRe21155

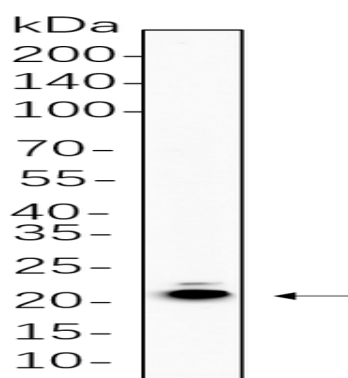


Background

Cell localization: Cytoplasm. Myosin, a structural component of muscle, consists of two heavy chains and four light chains. The protein encoded by this gene is a myosin light chain that may regulate muscle contraction by modulating the ATPase activity of myosin heads. The encoded protein binds calcium and is activated by myosin light chain kinase. Two transcript variants encoding different isoforms have been found for this gene. [provided by RefSeq, Jul 2008],

Research Area

Image Data



Hela cell lysates were separated by 4-20% SDS-PAGE, and the membrane was blotted with primary antibody 1:1000. The HRP-conjugated Goat anti-Rabbit IgG(H + L) antibody was used to detect the antibody.

Note

For research use only.