

**Product Name: PAX-8 Rabbit Monoclonal Antibody**  
**Catalog #: AMRe21145**



## Summary

|                        |                                  |
|------------------------|----------------------------------|
| <b>Production Name</b> | PAX-8 Rabbit Monoclonal Antibody |
| <b>Description</b>     | Rabbit Monoclonal Antibody       |
| <b>Host</b>            | Rabbit                           |
| <b>Application</b>     | WB,IHC,IF,IP,ELISA               |
| <b>Reactivity</b>      | Human,Mouse,Rat                  |

## Performance

|                     |  |
|---------------------|--|
| <b>Conjugation</b>  | Unconjugated   |
| <b>Modification</b> | Unmodified   |
| <b>Isotype</b>      | IgG,Kappa  |
| <b>Clonality</b>    | Monoclonal   |
| <b>Form</b>         | Liquid   |
| <b>Storage</b>      | Store at 4°C short term. Aliquot and store at -20°C long term. Avoid freeze/thaw cycles. |
| <b>Buffer</b>       | PBS, 50% glycerol, 0.05% Proclin 300, 0.05%BSA   |
| <b>Purification</b> | Protein A  |

## Immunogen

|                          |                          |
|--------------------------|--------------------------|
| <b>Gene Name</b>         | PAX8                     |
| <b>Alternative Names</b> | Paired box protein Pax-8 |
| <b>Gene ID</b>           | 7849.0                   |
| <b>SwissProt ID</b>      | Q06710.                  |

## Application

|                         |  |
|-------------------------|--|
| <b>Dilution Ratio</b>   | IHC 1:200-1:1000;WB 1:2000-1:10000;IF 1:200-1:1000;ELISA 1:5000-1:20000;IP 1:50-1:200; |
| <b>Molecular Weight</b> | Calculated MW:48kD;Observed MW:55kD  |

## Background

Cell localization:Nucleus.This gene encodes a member of the paired box (PAX) family of transcription factors. Members of

**Product Name: PAX-8 Rabbit Monoclonal Antibody**  
**Catalog #: AMRe21145**

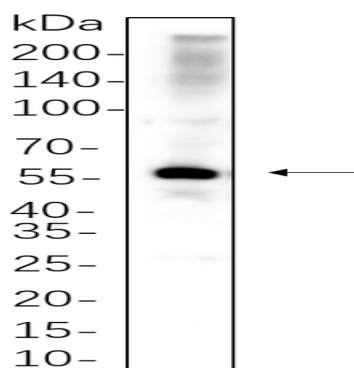
---



this gene family typically encode proteins that contain a paired box domain, an octapeptide, and a paired-type homeodomain. This nuclear protein is involved in thyroid follicular cell development and expression of thyroid-specific genes. Mutations in this gene have been associated with thyroid dysgenesis, thyroid follicular carcinomas and atypical follicular thyroid adenomas. Alternatively spliced transcript variants encoding different isoforms have been described. [provided by RefSeq, Mar 2010]

## Research Area

## Image Data



L929 whole cell lysates were separated by 10% SDS-PAGE, and the membrane was blotted with primary antibody(1:1000).  
The HRP-conjugated Goat anti-Rabbit IgG(H + L) antibody was used to detect the antibody.

## Note

For research use only.