

Product Name: RUNX1 Rabbit Monoclonal Antibody
Catalog #: AMRe21144



Summary

Production Name	RUNX1 Rabbit Monoclonal Antibody
Description	Rabbit Monoclonal Antibody
Host	Rabbit
Application	WB,IHC,IF,IP,ELISA
Reactivity	Human,Mouse,Rat

Performance

Conjugation	Unconjugated
Modification	Unmodified
Isotype	IgG,Kappa
Clonality	Monoclonal
Form	Liquid
Storage	Store at 4°C short term. Aliquot and store at -20°C long term. Avoid freeze/thaw cycles.
Buffer	PBS, 50% glycerol, 0.05% Proclin 300, 0.05%BSA
Purification	Protein A

Immunogen

Gene Name	RUNX1 RUNX1;AML1;CBFA2;Runt-related transcription factor 1;Acute myeloid leukemia 1
Alternative Names	protein;Core-binding factor subunit alpha-2;CBF-alpha-2;Oncogene AML-1;Polyomavirus enhancer-binding protein 2 alpha B subunit;PEA2-alpha B;PEBP2-alpha
Gene ID	861.0
SwissProt ID	Q01196.

Application

Dilution Ratio	IHC 1:200-1:1000;WB 1:2000-1:10000;IF 1:200-1:1000;ELISA 1:5000-1:20000;IP 1:50-1:200;
Molecular Weight	Calculated MW:49kD;Observed MW:43-55kD

Product Name: RUNX1 Rabbit Monoclonal Antibody
Catalog #: AMRe21144

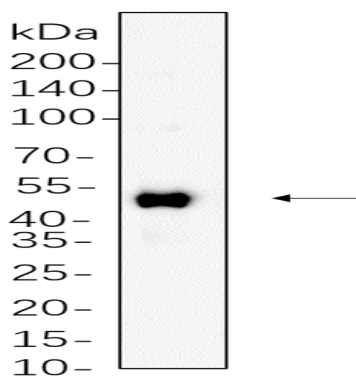


Background

Cell localization:Nucleus.Core binding factor (CBF) is a heterodimeric transcription factor that binds to the core element of many enhancers and promoters. The protein encoded by this gene represents the alpha subunit of CBF and is thought to be involved in the development of normal hematopoiesis. Chromosomal translocations involving this gene are well-documented and have been associated with several types of leukemia. Three transcript variants encoding different isoforms have been found for this gene. [provided by RefSeq, Jul 2008],

Research Area

Image Data



C6 whole cell lysates were separated by 10% SDS-PAGE, and the membrane was blotted with primary antibody(1:1000). The HRP-conjugated Goat anti-Rabbit IgG(H + L) antibody was used to detect the antibody.

Note

For research use only.