

Product Name: GPER1 Rabbit Monoclonal Antibody
Catalog #: AMRe21139



Summary

| | |
|------------------------|----------------------------------|
| Production Name | GPER1 Rabbit Monoclonal Antibody |
| Description | Rabbit Monoclonal Antibody |
| Host | Rabbit |
| Application | WB,IHC,IF,IP,ELISA |
| Reactivity | Human,Mouse,Rat |

Performance

| | |
|---------------------|--|
| Conjugation | Unconjugated |
| Modification | Unmodified |
| Isotype | IgG,Kappa |
| Clonality | Monoclonal |
| Form | Liquid |
| Storage | Store at 4°C short term. Aliquot and store at -20°C long term. Avoid freeze/thaw cycles. |
| Buffer | PBS, 50% glycerol, 0.05% Proclin 300, 0.05%BSA |
| Purification | Protein A |

Immunogen

| | |
|--------------------------|---------|
| Gene Name | GPER1 |
| Alternative Names | |
| Gene ID | 2852.0 |
| SwissProt ID | Q99527. |

Application

| | |
|-------------------------|---|
| Dilution Ratio | IHC 1:1000-1:5000;WB 1:2000-1:10000;IF 1:200-1:1000;ELISA 1:5000-1:20000;IP 1:50-1:200; |
| Molecular Weight | Calculated MW:42kD;Observed MW:55kD |

Background

Cell localization:Membrane.This gene is a member of the G-protein coupled receptor 1 family and encodes a multi-pass

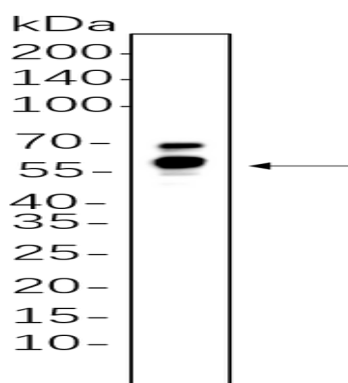
Product Name: GPER1 Rabbit Monoclonal Antibody
Catalog #: AMRe21139



membrane protein that localizes to the endoplasmic reticulum. The protein binds estrogen, resulting in intracellular calcium mobilization and synthesis of phosphatidylinositol 3,4,5-trisphosphate in the nucleus. This protein therefore plays a role in the rapid nongenomic signaling events widely observed following stimulation of cells and tissues with estrogen. Alternate transcriptional splice variants which encode the same protein have been characterized. [provided by RefSeq, Jul 2008],

Research Area

Image Data



Mouse brain whole cell lysates were separated by 10% SDS-PAGE, and the membrane was blotted with primary antibody(1:1000). The HRP-conjugated Goat anti-Rabbit IgG(H + L) antibody was used to detect the antibody.

Note

For research use only.