

Product Name: Endoplasmin Rabbit Monoclonal Antibody
Catalog #: AMRe21137

Summary

Production Name	Endoplasmin Rabbit Monoclonal Antibody
Description	Rabbit Monoclonal Antibody
Host	Rabbit
Application	WB,IHC,IF,IP,ELISA
Reactivity	Human,Mouse,Rat

Performance

Conjugation	Unconjugated
Modification	Unmodified
Isotype	IgG,Kappa
Clonality	Monoclonal
Form	Liquid
Storage	Store at 4°C short term. Aliquot and store at -20°C long term. Avoid freeze/thaw cycles.
Buffer	PBS, 50% glycerol, 0.05% Proclin 300, 0.05%BSA
Purification	Protein A

Immunogen

Gene Name	HSP90B1
Alternative Names	HSP90B1;GRP94;TRA1;Endoplasmin;94 kDa glucose-regulated protein;GRP-94;Heat shock protein 90 kDa beta member 1;Tumor rejection antigen 1;gp96 homolog
Gene ID	7184.0
SwissProt ID	P14625.

Application

Dilution Ratio	IHC 1:1000-1:5000;WB 1:2000-1:10000;IF 1:200-1:1000;ELISA 1:5000-1:20000;IP 1:50-1:200;
Molecular Weight	Calculated MW:93kD;Observed MW:100kD

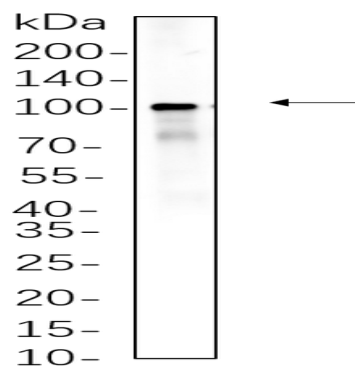
Product Name: Endoplasmin Rabbit Monoclonal Antibody
Catalog #: AMRe21137

Background

Cell localization:Endoplasmic reticulum.This gene encodes a member of a family of adenosine triphosphate(ATP)-metabolizing molecular chaperones with roles in stabilizing and folding other proteins. The encoded protein is localized to melanosomes and the endoplasmic reticulum. Expression of this protein is associated with a variety of pathogenic states, including tumor formation. There is a microRNA gene located within the 5' exon of this gene. There are pseudogenes for this gene on chromosomes 1 and 15. [provided by RefSeq, Aug 2012],

Research Area

Image Data



Hela whole cell lysates were separated by 10% SDS-PAGE, and the membrane was blotted with primary antibody(1:1000).
The HRP-conjugated Goat anti-Rabbit IgG(H + L) antibody was used to detect the antibody.

Note

For research use only.