

Product Name: BMAL1 Rabbit Monoclonal Antibody
Catalog #: AMRe21134



Summary

Production Name	BMAL1 Rabbit Monoclonal Antibody
Description	Rabbit Monoclonal Antibody
Host	Rabbit
Application	WB,IHC,IF,IP,ELISA
Reactivity	Human,Mouse,Rat

Performance

Conjugation	Unconjugated
Modification	Unmodified
Isotype	IgG,Kappa
Clonality	Monoclonal
Form	Liquid
Storage	Store at 4°C short term. Aliquot and store at -20°C long term. Avoid freeze/thaw cycles.
Buffer	PBS, 50% glycerol, 0.05% Proclin 300, 0.05%BSA
Purification	Protein A

Immunogen

Gene Name	ARNTL
Alternative Names	ARNTL;BHLHE5;BMAL1;MOP3;PASD3;Aryl hydrocarbon receptor nuclear translocator-like protein 1;Basic-helix-loop-helix-PAS protein MOP3;Brain and muscle ARNT-like 1Class E basic helix-loop-helix protein 5;bHLHe5;Member of PAS protein 3;PAS domain-containing protein 3;bHLH-PAS protein JAP3
Gene ID	406.0
SwissProt ID	O00327.

Application

Dilution Ratio	IHC 1:200-1:1000;WB 1:2000-1:10000;IF 1:200-1:1000;ELISA 1:5000-1:20000;IP 1:50-1:200;
Molecular Weight	Calculated MW:69kD;Observed MW:78kD

Product Name: BMAL1 Rabbit Monoclonal Antibody
Catalog #: AMRe21134

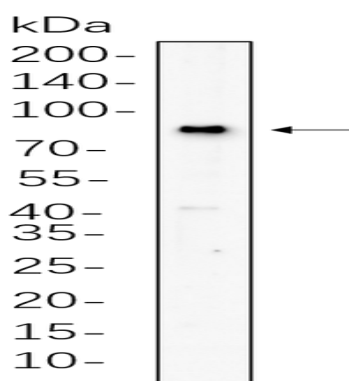


Background

Cell localization:Nucleus.The protein encoded by this gene is a basic helix-loop-helix protein that forms a heterodimer with CLOCK. This heterodimer binds E-box enhancer elements upstream of Period (PER1, PER2, PER3) and Cryptochrome (CRY1, CRY2) genes and activates transcription of these genes. PER and CRY proteins heterodimerize and repress their own transcription by interacting in a feedback loop with CLOCK/ARNTL complexes. Defects in this gene have been linked to infertility, problems with gluconeogenesis and lipogenesis, and altered sleep patterns. Several transcript variants encoding different isoforms have been found for this gene. [provided by RefSeq, Jul 2014],

Research Area

Image Data



Rat brain cell lysates were separated by 4-20% SDS-PAGE, and the membrane was blotted with primary antibody 1:1000. The HRP-conjugated Goat anti-Rabbit IgG(H + L) antibody was used to detect the antibody.

Note

For research use only.