

Product Name: PLK1 Rabbit Monoclonal Antibody
Catalog #: AMRe21126



Summary

Production Name	PLK1 Rabbit Monoclonal Antibody
Description	Rabbit Monoclonal Antibody
Host	Rabbit
Application	WB,IHC,IF,IP,ELISA
Reactivity	Human,Mouse,Rat

Performance

Conjugation	Unconjugated
Modification	Unmodified
Isotype	IgG,Kappa
Clonality	Monoclonal
Form	Liquid
Storage	Store at 4°C short term. Aliquot and store at -20°C long term. Avoid freeze/thaw cycles.
Buffer	PBS, 50% glycerol, 0.05% Proclin 300, 0.05%BSA
Purification	Protein A

Immunogen

Gene Name	PLK1
Alternative Names	Serine/threonine-protein kinase PLK1;Polo-like kinase 1;PLK-1;Serine/threonine-protein kinase 13;STPK13;
Gene ID	5347.0
SwissProt ID	P53350.

Application

Dilution Ratio	IHC 1:200-1:1000;WB 1:2000-1:10000;IF 1:200-1:1000;ELISA 1:5000-1:20000;IP 1:50-1:200;
Molecular Weight	Calculated MW:68kD;Observed MW:68kD

Background

Product Name: PLK1 Rabbit Monoclonal Antibody
Catalog #: AMRe21126

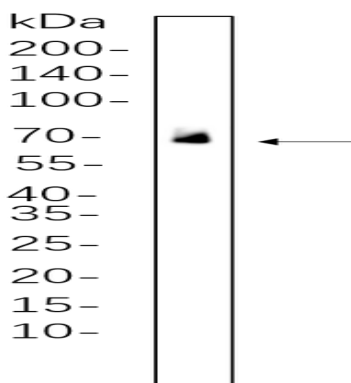


Cell localization:Nucleus.The Ser/Thr protein kinase encoded by this gene belongs to the CDC5/Polo subfamily. It is highly expressed during mitosis and elevated levels are found in many different types of cancer. Depletion of this protein in cancer cells dramatically inhibited cell proliferation and induced apoptosis; hence, it is a target for cancer therapy.

[provided by RefSeq, Sep 2015],

Research Area

Image Data



U-14 whole cell lysates were separated by 10% SDS-PAGE, and the membrane was blotted with primary antibody(1:1000).

The HRP-conjugated Goat anti-Rabbit IgG(H + L) antibody was used to detect the antibody.

Note

For research use only.