

**Product Name: PLC  $\gamma$ 1 Rabbit Monoclonal Antibody**  
**Catalog #: AMRe21121**



## Summary

<b>Production Name</b>	PLC $\gamma$ 1 Rabbit Monoclonal Antibody
<b>Description</b>	Rabbit Monoclonal Antibody
<b>Host</b>	Rabbit
<b>Application</b>	WB,IHC,IF,IP,ELISA
<b>Reactivity</b>	Human,Mouse,Rat

## Performance

<b>Conjugation</b>	Unconjugated
<b>Modification</b>	Unmodified
<b>Isotype</b>	IgG,Kappa
<b>Clonality</b>	Monoclonal
<b>Form</b>	Liquid
<b>Storage</b>	Store at 4°C short term. Aliquot and store at -20°C long term. Avoid freeze/thaw cycles.
<b>Buffer</b>	PBS, 50% glycerol, 0.05% Proclin 300, 0.05%BSA
<b>Purification</b>	Protein A

## Immunogen

<b>Gene Name</b>	PLCG1 PLCG1;PLC1;1-phosphatidylinositol 4,5-bisphosphate phosphodiesterase gamma-1;PLC-148;Phosphoinositide phospholipase C-gamma-1;Phospholipase C-II;PLC-II;Phospholipase C-gamma-1;PLC-gamma-1
<b>Alternative Names</b>	
<b>Gene ID</b>	5335.0
<b>SwissProt ID</b>	P19174.

## Application

<b>Dilution Ratio</b>	IHC 1:200-1:1000;WB 1:2000-1:10000;IF 1:200-1:1000;ELISA 1:5000-1:20000;IP 1:50-1:200;
<b>Molecular Weight</b>	Calculated MW:149kD;Observed MW:149kD

**Product Name: PLC  $\gamma$ 1 Rabbit Monoclonal Antibody**  
**Catalog #: AMRe21121**

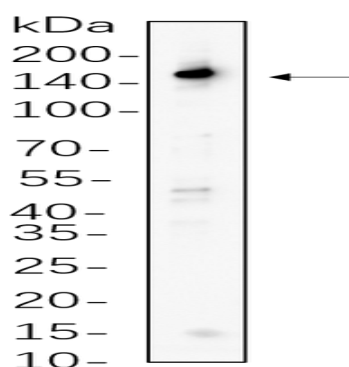


## Background

Cell localization: Cytoplasm. The protein encoded by this gene catalyzes the formation of inositol 1,4,5-trisphosphate and diacylglycerol from phosphatidylinositol 4,5-bisphosphate. This reaction uses calcium as a cofactor and plays an important role in the intracellular transduction of receptor-mediated tyrosine kinase activators. For example, when activated by SRC, the encoded protein causes the Ras guanine nucleotide exchange factor RasGRP1 to translocate to the Golgi, where it activates Ras. Also, this protein has been shown to be a major substrate for heparin-binding growth factor 1 (acidic fibroblast growth factor)-activated tyrosine kinase. Two transcript variants encoding different isoforms have been found for this gene. [provided by RefSeq, Jul 2008],

## Research Area

## Image Data



Rat brain cell lysates were separated by 4-20% SDS-PAGE, and the membrane was blotted with primary antibody 1:1000. The HRP-conjugated Goat anti-Rabbit IgG(H + L) antibody was used to detect the antibody.

## Note

For research use only.