

Product Name: eIF4E Rabbit Monoclonal Antibody
Catalog #: AMRe21118



Summary

Production Name	eIF4E Rabbit Monoclonal Antibody
Description	Rabbit Monoclonal Antibody
Host	Rabbit
Application	WB,IHC,IF,IP,ELISA
Reactivity	Human,Mouse,Rat

Performance

Conjugation	Unconjugated
Modification	Unmodified
Isotype	IgG,Kappa
Clonality	Monoclonal
Form	Liquid
Storage	Store at 4°C short term. Aliquot and store at -20°C long term. Avoid freeze/thaw cycles.
Buffer	PBS, 50% glycerol, 0.05% Proclin 300, 0.05%BSA
Purification	Protein A

Immunogen

Gene Name	EIF4E
Alternative Names	EIF4E;EIF4EL1;EIF4F;Eukaryotic translation initiation factor 4E;eIF-4E;eIF4E;eIF-4F 25 kDa subunit;mRNA cap-binding protein
Gene ID	1977.0
SwissProt ID	P06730.

Application

Dilution Ratio	IHC 1:200-1:1000;WB 1:2000-1:10000;IF 1:200-1:1000;ELISA 1:5000-1:20000;IP 1:50-1:200;
Molecular Weight	Calculated MW:25kD;Observed MW:25kD

Background

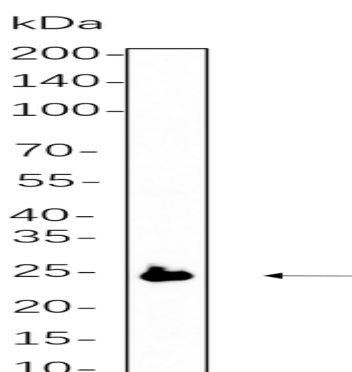
Product Name: eIF4E Rabbit Monoclonal Antibody
Catalog #: AMRe21118



Cell localization: Cytoplasm, Nucleus. The protein encoded by this gene is a component of the eukaryotic translation initiation factor 4F complex, which recognizes the 7-methylguanosine cap structure at the 5' end of messenger RNAs. The encoded protein aids in translation initiation by recruiting ribosomes to the 5'-cap structure. Association of this protein with the 4F complex is the rate-limiting step in translation initiation. This gene acts as a proto-oncogene, and its expression and activation is associated with transformation and tumorigenesis. Several pseudogenes of this gene are found on other chromosomes. Alternative splicing results in multiple transcript variants. [provided by RefSeq, Sep 2015],

Research Area

Image Data



Hela cell lysates were separated by 4-20% SDS-PAGE, and the membrane was blotted with primary antibody 1:1000. The HRP-conjugated Goat anti-Rabbit IgG(H + L) antibody was used to detect the antibody.

Note

For research use only.