

Product Name: PDPK1 Rabbit Monoclonal Antibody
Catalog #: AMRe21117



Summary

Production Name	PDPK1 Rabbit Monoclonal Antibody
Description	Rabbit Monoclonal Antibody
Host	Rabbit
Application	WB,IHC,IF,IP,ELISA
Reactivity	Human,Mouse,Rat

Performance

Conjugation	Unconjugated
Modification	Unmodified
Isotype	IgG,Kappa
Clonality	Monoclonal
Form	Liquid
Storage	Store at 4°C short term. Aliquot and store at -20°C long term. Avoid freeze/thaw cycles.
Buffer	PBS, 50% glycerol, 0.05% Proclin 300, 0.05%BSA
Purification	Protein A

Immunogen

Gene Name	PDPK1
Alternative Names	PDPK1;PDK1;3-phosphoinositide-dependent protein kinase 1;hPDK1
Gene ID	5170.0
SwissProt ID	O15530.

Application

Dilution Ratio	IHC 1:200-1:1000;WB 1:2000-1:10000;IF 1:200-1:1000;ELISA 1:5000-1:20000;IP 1:50-1:200;
Molecular Weight	Calculated MW:63kD;Observed MW:58-68kD

Background

Cell localization:Membrane, Cytoplasm.catalytic activity:ATP + a protein = ADP + a

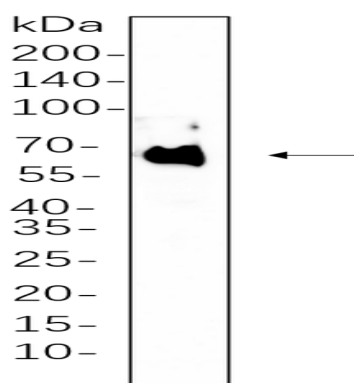
Product Name: PDPK1 Rabbit Monoclonal Antibody
Catalog #: AMRe21117



phosphoprotein.,function:Phosphorylates and activates not only PKB/AKT, but also PKA, PKC-zeta, RPS6KA1 and RPS6KB1. May play a general role in signaling processes and in development (By similarity). Isoform 3 is catalytically inactive.,PTM:Phosphorylated on tyrosine and serine/threonine. Phosphorylation on Ser-241 in the activation loop is required for full activity. PDK1 itself can autophosphorylate Ser-241, leading to its own activation.,similarity:Belongs to the protein kinase superfamily.,similarity:Belongs to the protein kinase superfamily. AGC Ser/Thr protein kinase family. PDK1 subfamily.,similarity:Contains 1 PH domain.,similarity:Contains 1 protein kinase domain.,subcellular location:Membrane-associated after cell stimulation leading to its translocation. Tyrosine phosphorylation seems to occur only at the plasma membrane.,subunit:Interacts with TUSC4.,tissue specificity:Appears to be expressed ubiquitously.,

Research Area

Image Data



Hela whole cell lysates were separated by 10% SDS-PAGE, and the membrane was blotted with primary antibody(1:1000).
The HRP-conjugated Goat anti-Rabbit IgG(H + L) antibody was used to detect the antibody.

Note

For research use only.