

**Product Name: ULK1 (Phospho Ser757) Rabbit
Monoclonal Antibody
Catalog #: AMRe21107**

Summary

Production Name	ULK1 (Phospho Ser757) Rabbit Monoclonal Antibody
Description	Rabbit Monoclonal Antibody
Host	Rabbit
Application	WB,IF,IP,ELISA
Reactivity	Human,Mouse,Rat

Performance

Conjugation	Phospho
Modification	Phosphorylated
Isotype	IgG,Kappa
Clonality	Monoclonal
Form	Liquid
Storage	Store at 4°C short term. Aliquot and store at -20°C long term. Avoid freeze/thaw cycles.
Buffer	PBS, 50% glycerol, 0.05% Proclin 300, 0.05%BSA
Purification	Protein A

Immunogen

Gene Name	ULK1
Alternative Names	ULK1;KIAA0722;Serine/threonine-protein kinase ULK1;Autophagy-related protein 1 homolog;ATG1;hATG1;Unc-51-like kinase 1
Gene ID	8408.0
SwissProt ID	O75385.

Application

Dilution Ratio	WB 1:2000-1:10000;IF 1:200-1:1000;ELISA 1:5000-1:20000;IP 1:50-1:200;
Molecular Weight	Calculated MW:113kD;Observed MW:150kD

Background

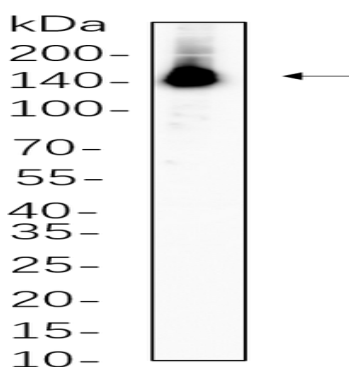
**Product Name: ULK1 (Phospho Ser757) Rabbit
Monoclonal Antibody
Catalog #: AMRe21107**



Cell localization: Cytoplasm, cytosol . Preautophagosomal structure . Under starvation conditions, is localized to punctate structures primarily representing the isolation membrane that sequesters a portion of the cytoplasm resulting in the formation of an autophagosome. ..catalytic activity: ATP + a protein = ADP + a phosphoprotein., function: Involved in axon growth. Plays an essential role in neurite extension of cerebellar granule cells., similarity: Belongs to the protein kinase superfamily. Ser/Thr protein kinase family. APG1/unc-51/ULK1 subfamily., similarity: Contains 1 protein kinase domain., subunit: Interacts with GABARAP and GABARAPL2., tissue specificity: Ubiquitously expressed. Detected in the following adult tissues: skeletal muscle, heart, pancreas, brain, placenta, liver, kidney, and lung.,

Research Area

Image Data



NIH-3T3 cell lysates were separated by 4-20% SDS-PAGE, and the membrane was blotted with primary antibody 1:1000. The HRP-conjugated Goat anti-Rabbit IgG(H + L) antibody was used to detect the antibody.

Note

For research use only.