

Product Name: Histone H3 (Mono Methyl Lys4) Rabbit Monoclonal Antibody
Catalog #: AMRe21105



Summary

Production Name	Histone H3 (Mono Methyl Lys4) Rabbit Monoclonal Antibody
Description	Rabbit Monoclonal Antibody
Host	Rabbit
Application	WB,IHC,IF,IP,ELISA
Reactivity	Human,Mouse,Rat

Performance

Conjugation	Methyl
Modification	Methylated
Isotype	IgG,Kappa
Clonality	Monoclonal
Form	Liquid
Storage	Store at 4°C short term. Aliquot and store at -20°C long term. Avoid freeze/thaw cycles.
Buffer	PBS, 50% glycerol, 0.05% Proclin 300, 0.05%BSA
Purification	Protein A

Immunogen

Gene Name	HIST1H3A H3K27ME2;HIST1H3A;H3FA;HIST1H3B;H3FL;HIST1H3C;H3FC;HIST1H3D;H3FB;HIST1H3E;H3FD;HIST1H3F;H3FI;HIST1H3G;H3FH;HIST1H3H;H3FK;HIST1H3I;H3FF;HIST1H3J;H3FJ;Histone H3.1;Histone H3/a;Histone H3/b;Histone H3/c;Histone H3/d;Histone H3/f;Histone H3/h;Histone H3/i;Histone H3/j;Histone H3/k;Histone H3/l;HIST2H3A;HIST2H3C;H3F2;H3FM;HIST2H3D;Histone H3.2;Histone H3/m;Histone H3/o;H3F3A;H3.3A;H3F3;PP781;H3F3B;H3.3B;Histone H3.3;H3F3C;Histone H3.3C;Histone H3.5
Alternative Names	
Gene ID	8350.0
SwissProt ID	P68431.

Application

**Product Name: Histone H3 (Mono Methyl Lys4) Rabbit
Monoclonal Antibody
Catalog #: AMRe21105**



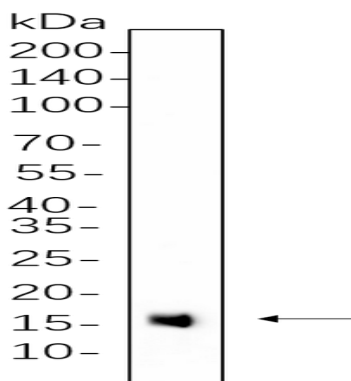
Dilution Ratio	IHC 1:5000-1:20000;WB 1:2000-1:10000;IF 1:200-1:1000;ELISA 1:5000-1:20000;IP 1:50-1:200;
Molecular Weight	Calculated MW:15kD;Observed MW:15kD

Background

Cell localization:Nucleus. Chromosome..Histones are basic nuclear proteins that are responsible for the nucleosome structure of the chromosomal fiber in eukaryotes. This structure consists of approximately 146 bp of DNA wrapped around a nucleosome, an octamer composed of pairs of each of the four core histones (H2A, H2B, H3, and H4). The chromatin fiber is further compacted through the interaction of a linker histone, H1, with the DNA between the nucleosomes to form higher order chromatin structures. This gene is intronless and encodes a replication-dependent histone that is a member of the histone H3 family. Transcripts from this gene lack polyA tails; instead, they contain a palindromic termination element. This gene is found in the large histone gene cluster on chromosome 6p22-p21.3. [provided by RefSeq, Aug 2015],

Research Area

Image Data



NIH-3T3 cell lysates were separated by 4-20% SDS-PAGE, and the membrane was blotted with primary antibody 1:1000. The HRP-conjugated Goat anti-Rabbit IgG(H + L) antibody was used to detect the antibody.

Note

For research use only.