

Product Name: SMAD5 (Phospho Ser463/Ser465) Rabbit Monoclonal Antibody
Catalog #: AMRe21103

Summary

Production Name	SMAD5 (Phospho Ser463/Ser465) Rabbit Monoclonal Antibody
Description	Rabbit Monoclonal Antibody
Host	Rabbit
Application	WB,IHC,IF,IP,ELISA
Reactivity	Human,Mouse,Rat

Performance

Conjugation	Phospho
Modification	Phosphorylated
Isotype	IgG,Kappa
Clonality	Monoclonal
Form	Liquid
Storage	Store at 4°C short term. Aliquot and store at -20°C long term. Avoid freeze/thaw cycles.
Buffer	PBS, 50% glycerol, 0.05% Proclin 300, 0.05%BSA
Purification	Protein A

Immunogen

Gene Name	SMAD5 SMAD5;MADH5;Mothers against decapentaplegic homolog 5;MAD homolog
Alternative Names	5;Mothers against DPP homolog 5;JV5-1;SMAD family member 5;SMAD 5;Smad5;hSmad5
Gene ID	4090.0
SwissProt ID	Q99717.

Application

Dilution Ratio	IHC 1:200-1:1000;WB 1:2000-1:10000;IF 1:200-1:1000;ELISA 1:5000-1:20000;IP 1:50- 1:200;
Molecular Weight	Calculated MW:52kD;Observed MW:60kD

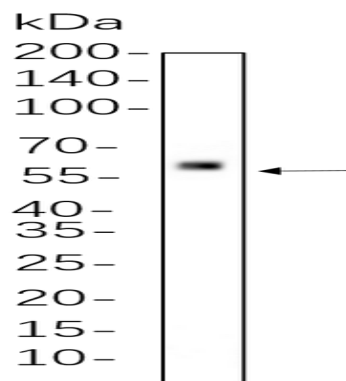
**Product Name: SMAD5 (Phospho Ser463/Ser465) Rabbit
Monoclonal Antibody
Catalog #: AMRe21103**

Background

Cell localization: Cytoplasm, Nucleus. The protein encoded by this gene is involved in the transforming growth factor beta signaling pathway that results in an inhibition of the proliferation of hematopoietic progenitor cells. The encoded protein is activated by bone morphogenetic proteins type 1 receptor kinase, and may be involved in cancer. Alternative splicing results in multiple transcript variants. [provided by RefSeq, Feb 2014],

Research Area

Image Data



MCF7 whole cell lysates were separated by 10% SDS-PAGE, and the membrane was blotted with primary antibody (1:1000). The HRP-conjugated Goat anti-Rabbit IgG(H + L) antibody was used to detect the antibody.

Note

For research use only.