

## Summary

<b>Production Name</b>	RSK2 Rabbit Monoclonal Antibody
<b>Description</b>	Rabbit Monoclonal Antibody
<b>Host</b>	Rabbit
<b>Application</b>	WB,IHC,IF,IP,ELISA
<b>Reactivity</b>	Human,Mouse,Rat

## Performance

<b>Conjugation</b>	Unconjugated
<b>Modification</b>	Unmodified
<b>Isotype</b>	IgG,Kappa
<b>Clonality</b>	Monoclonal
<b>Form</b>	Liquid
<b>Storage</b>	Store at 4°C short term. Aliquot and store at -20°C long term. Avoid freeze/thaw cycles.
<b>Buffer</b>	PBS, 50% glycerol, 0.05% Proclin 300, 0.05%BSA
<b>Purification</b>	Protein A

## Immunogen

<b>Gene Name</b>	RPS6KA3 Ribosomal protein S6 kinase alpha-3;S6K-alpha-3;90 kDa ribosomal protein S6 kinase 3;p90-RSK 3;p90RSK3;Insulin-stimulated protein kinase 1;ISPK-1;MAP kinase-activated protein kinase 1b;MAPK-activated protein kinase 1b;MAPKAP kinase 1b;MAPKAPK-1b;Ribosomal S6 kinase 2;RSK-2;pp90RSK2;
<b>Alternative Names</b>	
<b>Gene ID</b>	6197.0
<b>SwissProt ID</b>	P51812.

## Application

<b>Dilution Ratio</b>	IHC 1:200-1:1000;WB 1:2000-1:10000;IF 1:200-1:1000;ELISA 1:5000-1:20000;IP 1:50-1:200;
<b>Molecular Weight</b>	Calculated MW:84kD;Observed MW:84kD

**Product Name: RSK2 Rabbit Monoclonal Antibody**  
**Catalog #: AMRe21099**

---

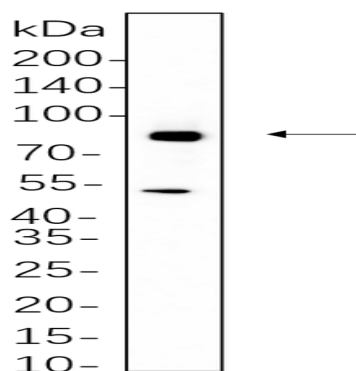


## Background

Cell localization: Nucleus . Cytoplasm ..ribosomal protein S6 kinase A3(RPS6KA3) Homo sapiens This gene encodes a member of the RSK (ribosomal S6 kinase) family of serine/threonine kinases. This kinase contains 2 non-identical kinase catalytic domains and phosphorylates various substrates, including members of the mitogen-activated kinase (MAPK) signalling pathway. The activity of this protein has been implicated in controlling cell growth and differentiation. Mutations in this gene have been associated with Coffin-Lowry syndrome (CLS). [provided by RefSeq, Jul 2008],

## Research Area

## Image Data



Ramos whole cell lysates were separated by 10% SDS-PAGE, and the membrane was blotted with primary antibody(1:1000).  
The HRP-conjugated Goat anti-Rabbit IgG(H + L) antibody was used to detect the antibody.

## Note

For research use only.