

Product Name: Cleaved N-terminal GSDMD Rabbit Monoclonal Antibody
Catalog #: AMRe21098

Summary

Production Name	Cleaved N-terminal GSDMD Rabbit Monoclonal Antibody
Description	Rabbit Monoclonal Antibody
Host	Rabbit
Application	WB,IF,IP,ELISA
Reactivity	Human,Mouse,Rat

Performance

Conjugation	Unconjugated
Modification	Unmodified
Isotype	IgG,Kappa
Clonality	Monoclonal
Form	Liquid
Storage	Store at 4°C short term. Aliquot and store at -20°C long term. Avoid freeze/thaw cycles.
Buffer	PBS, 50% glycerol, 0.05% Proclin 300, 0.05%BSA
Purification	Protein A

Immunogen

Gene Name	GSDMD
Alternative Names	
Gene ID	0.0
SwissProt ID	P57764.

Application

Dilution Ratio	WB 1:2000-1:10000;IF 1:200-1:1000;ELISA 1:5000-1:20000;IP 1:50-1:200;
Molecular Weight	Calculated MW:53kD;Observed MW:35kD

Background

Cell localization:[Gasdermin-D]: Cytoplasm, cytosol . Inflammasome . In response to a canonical inflammasome stimulus,

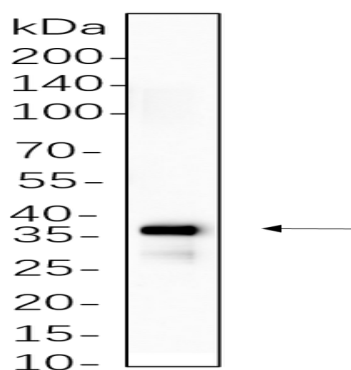
**Product Name: Cleaved N-terminal GSDMD Rabbit
Monoclonal Antibody
Catalog #: AMRe21098**



such as nigericin, recruited to NLRP3 inflammasome with similar kinetics to that of uncleaved CASP1 precursor. .; [Gasdermin-D, N-terminal]: Cell membrane ; Multi-pass membrane protein . Secreted . Released in the extracellular milieu following pyroptosis. .; [Gasdermin-D, C-terminal]: Cytoplasm, cytosol ..

Research Area

Image Data



THP-1 cell lysates were separated by 4-20% SDS-PAGE, and the membrane was blotted with primary antibody 1:1000. The HRP-conjugated Goat anti-Rabbit IgG(H + L) antibody was used to detect the antibody.

Note

For research use only.