

**Product Name: PKR Rabbit Monoclonal Antibody**  
**Catalog #: AMRe21097**



## Summary

<b>Production Name</b>	PKR Rabbit Monoclonal Antibody
<b>Description</b>	Rabbit Monoclonal Antibody
<b>Host</b>	Rabbit
<b>Application</b>	WB,IHC,IF,IP,ELISA
<b>Reactivity</b>	Human,Mouse,Rat

## Performance

<b>Conjugation</b>	Unconjugated
<b>Modification</b>	Unmodified
<b>Isotype</b>	IgG,Kappa
<b>Clonality</b>	Monoclonal
<b>Form</b>	Liquid
<b>Storage</b>	Store at 4°C short term. Aliquot and store at -20°C long term. Avoid freeze/thaw cycles.
<b>Buffer</b>	PBS, 50% glycerol, 0.05% Proclin 300, 0.05%BSA
<b>Purification</b>	Protein A

## Immunogen

<b>Gene Name</b>	EIF2AK2 EIF2AK2;PKR;PRKR;Interferon-induced;double-stranded RNA-activated protein
<b>Alternative Names</b>	kinase;Eukaryotic translation initiation factor 2-alpha kinase 2;eIF-2A protein kinase 2;Interferon-inducible RNA-dependent protein kinase;P1/eIF-2A protein k
<b>Gene ID</b>	5610.0
<b>SwissProt ID</b>	P19525.

## Application

<b>Dilution Ratio</b>	IHC 1:100-1:500;WB 1:2000-1:10000;IF 1:200-1:1000;ELISA 1:5000-1:20000;IP 1:50-1:200;
<b>Molecular Weight</b>	Calculated MW:62kD;Observed MW:62kD

**Product Name: PKR Rabbit Monoclonal Antibody**  
**Catalog #: AMRe21097**

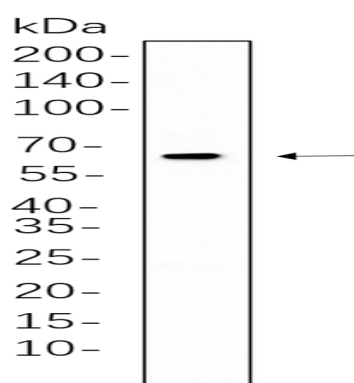


## Background

Cell localization: Cytoplasm . Nucleus . Cytoplasm, perinuclear region . Nuclear localization is elevated in acute leukemia, myelodysplastic syndrome (MDS), melanoma, breast, colon, prostate and lung cancer patient samples or cell lines as well as neurocytes from advanced Creutzfeldt-Jakob disease patients. ..The protein encoded by this gene is a serine/threonine protein kinase that is activated by autophosphorylation after binding to dsRNA. The activated form of the encoded protein can phosphorylate translation initiation factor EIF2S1, which in turn inhibits protein synthesis. This protein is also activated by manganese ions and heparin. Three transcript variants encoding two different isoforms have been found for this gene. [provided by RefSeq, Oct 2011],

## Research Area

## Image Data



K562 whole cell lysates were separated by 10% SDS-PAGE, and the membrane was blotted with primary antibody(1:1000).  
The HRP-conjugated Goat anti-Rabbit IgG(H + L) antibody was used to detect the antibody.

## Note

For research use only.