

**Product Name: MAPKAPK-2 Rabbit Monoclonal Antibody**  
**Catalog #: AMRe21096**

---

## Summary

<b>Production Name</b>	MAPKAPK-2 Rabbit Monoclonal Antibody
<b>Description</b>	Rabbit Monoclonal Antibody
<b>Host</b>	Rabbit
<b>Application</b>	WB,IF,IP,ELISA
<b>Reactivity</b>	Human,Mouse,Rat

## Performance

<b>Conjugation</b>	Unconjugated
<b>Modification</b>	Unmodified
<b>Isotype</b>	IgG,Kappa
<b>Clonality</b>	Monoclonal
<b>Form</b>	Liquid
<b>Storage</b>	Store at 4°C short term. Aliquot and store at -20°C long term. Avoid freeze/thaw cycles.
<b>Buffer</b>	PBS, 50% glycerol, 0.05% Proclin 300, 0.05%BSA
<b>Purification</b>	Protein A

## Immunogen

<b>Gene Name</b>	MAPKAPK2
<b>Alternative Names</b>	MAPKAPK2;MAP kinase-activated protein kinase 2;MAPK-activated protein kinase 2;MAPKAP kinase 2;MAPKAP-K2;MAPKAPK-2;MK-2;MK2
<b>Gene ID</b>	9261.0
<b>SwissProt ID</b>	P49137.

## Application

<b>Dilution Ratio</b>	WB 1:2000-1:10000;IF 1:200-1:1000;ELISA 1:5000-1:20000;IP 1:50-1:200;
<b>Molecular Weight</b>	Calculated MW:46kD;Observed MW:46,55kD

## Background

---

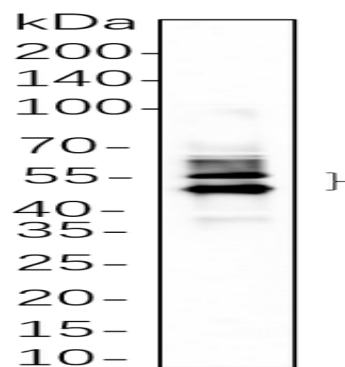
**Product Name: MAPKAPK-2 Rabbit Monoclonal Antibody**  
**Catalog #: AMRe21096**

---

Cell localization: Cytoplasm . Nucleus . Phosphorylation and subsequent activation releases the autoinhibitory helix, resulting in the export from the nucleus into the cytoplasm. This gene encodes a member of the Ser/Thr protein kinase family. This kinase is regulated through direct phosphorylation by p38 MAP kinase. In conjunction with p38 MAP kinase, this kinase is known to be involved in many cellular processes including stress and inflammatory responses, nuclear export, gene expression regulation and cell proliferation. Heat shock protein HSP27 was shown to be one of the substrates of this kinase in vivo. Two transcript variants encoding two different isoforms have been found for this gene. [provided by RefSeq, Jul 2008],

## Research Area

## Image Data



Rat heart whole cell lysates were separated by 10% SDS-PAGE, and the membrane was blotted with primary antibody (1:1000). The HRP-conjugated Goat anti-Rabbit IgG(H + L) antibody was used to detect the antibody.

## Note

For research use only.