

**Product Name: RPS6 (Phospho Ser240/Ser244) Rabbit
Monoclonal Antibody
Catalog #: AMRe21083**



Summary

Production Name	RPS6 (Phospho Ser240/Ser244) Rabbit Monoclonal Antibody
Description	Rabbit Monoclonal Antibody
Host	Rabbit
Application	WB,IHC,IF,IP,ELISA
Reactivity	Human,Mouse,Rat

Performance

Conjugation	Phospho
Modification	Phosphorylated
Isotype	IgG,Kappa
Clonality	Monoclonal
Form	Liquid
Storage	Store at 4°C short term. Aliquot and store at -20°C long term. Avoid freeze/thaw cycles.
Buffer	PBS, 50% glycerol, 0.05% Proclin 300, 0.05%BSA
Purification	Protein A

Immunogen

Gene Name	RPS6
Alternative Names	RPS6;OK/SW-cl.2;40S ribosomal protein S6;Phosphoprotein NP33
Gene ID	6194.0
SwissProt ID	P62753.

Application

Dilution Ratio	IHC 1:1000-1:4000;WB 1:2000-1:10000;IF 1:200-1:1000;ELISA 1:5000-1:20000;IP 1:50-1:200;
Molecular Weight	Calculated MW:29kD;Observed MW:29kD

Background

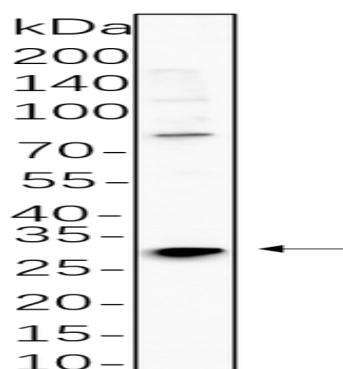
**Product Name: RPS6 (Phospho Ser240/Ser244) Rabbit
Monoclonal Antibody
Catalog #: AMRe21083**



Cell localization:nucleus,nucleoplasm,nucleolus,cytoplasm,cytosol,ribosome,polysome,small ribosomal subunit,membrane,cytosolic small ribosomal subunit,dendrite,intracellular ribonucleoprotein complex,cytoplasmic ribonucleoprotein granu.Ribosomes, the organelles that catalyze protein synthesis, consist of a small 40S subunit and a large 60S subunit. Together these subunits are composed of 4 RNA species and approximately 80 structurally distinct proteins. This gene encodes a cytoplasmic ribosomal protein that is a component of the 40S subunit. The protein belongs to the S6E family of ribosomal proteins. It is the major substrate of protein kinases in the ribosome, with subsets of five C-terminal serine residues phosphorylated by different protein kinases. Phosphorylation is induced by a wide range of stimuli, including growth factors, tumor-promoting agents, and mitogens. Dephosphorylation occurs at growth arrest. The protein may contribute to the control of cell growth and proliferation through the selective translation of particular classes of mRNA. As is typical for genes encoding ribosomal proteins, there are multiple processed

Research Area

Image Data



NIH-3T3 cell lysates were separated by 4-20% SDS-PAGE, and the membrane was blotted with primary antibody 1:1000. The HRP-conjugated Goat anti-Rabbit IgG(H + L) antibody was used to detect the antibody.

Note

For research use only.