

**Product Name: MX1 Rabbit Monoclonal Antibody**  
**Catalog #: AMRe21071**



## Summary

<b>Production Name</b>	MX1 Rabbit Monoclonal Antibody
<b>Description</b>	Rabbit Monoclonal Antibody
<b>Host</b>	Rabbit
<b>Application</b>	WB,IHC,IF,IP,ELISA
<b>Reactivity</b>	Human,Mouse,Rat

## Performance

<b>Conjugation</b>	Unconjugated
<b>Modification</b>	Unmodified
<b>Isotype</b>	IgG,Kappa
<b>Clonality</b>	Monoclonal
<b>Form</b>	Liquid
<b>Storage</b>	Store at 4°C short term. Aliquot and store at -20°C long term. Avoid freeze/thaw cycles.
<b>Buffer</b>	PBS, 50% glycerol, 0.05% Proclin 300, 0.05%BSA
<b>Purification</b>	Protein A

## Immunogen

<b>Gene Name</b>	MX1
<b>Alternative Names</b>	
<b>Gene ID</b>	4599.0
<b>SwissProt ID</b>	P20591.

## Application

<b>Dilution Ratio</b>	IHC 1:200-1:1000;WB 1:1000-1:5000;IF 1:200-1:1000;ELISA 1:5000-1:20000;IP 1:50-1:200;
<b>Molecular Weight</b>	Calculated MW:76kD;Observed MW:76kD

## Background

Cell localization:Cytoplasm . Endoplasmic reticulum membrane ; Peripheral membrane protein ; Cytoplasmic side.

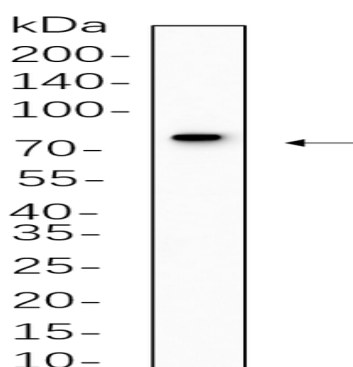
**Product Name: MX1 Rabbit Monoclonal Antibody**  
**Catalog #: AMRe21071**



Cytoplasm, perinuclear region . Binds preferentially to negatively charged phospholipids (PubMed:21900240). Colocalizes with CCHFV protein N in the perinuclear region (PubMed:15047845). .; [Isoform 2]: Cytoplasm . Nucleus . Translocates into the nuclei of HSV-1 infected cells (PubMed:20603636). ..This gene encodes a guanosine triphosphate (GTP)-metabolizing protein that participates in the cellular antiviral response. The encoded protein is induced by type I and type II interferons and antagonizes the replication process of several different RNA and DNA viruses. There is a related gene located adjacent to this gene on chromosome 21, and there are multiple pseudogenes located in a cluster on chromosome 4. Alternative splicing results in multiple transcript variants. [provided by RefSeq, Sep 2013],

## Research Area

## Image Data



A549 cell lysates were separated by 4-20% SDS-PAGE, and the membrane was blotted with primary antibody 1:1000. The HRP-conjugated Goat anti-Rabbit IgG(H + L) antibody was used to detect the antibody.

## Note

For research use only.