

Product Name: Caspase-6 Rabbit Monoclonal Antibody
Catalog #: AMRe21070



Summary

Production Name	Caspase-6 Rabbit Monoclonal Antibody
Description	Rabbit Monoclonal Antibody
Host	Rabbit
Application	WB,IHC,IF,IP,ELISA
Reactivity	Human,Mouse,Rat

Performance

Conjugation	Unconjugated
Modification	Unmodified
Isotype	IgG,Kappa
Clonality	Monoclonal
Form	Liquid
Storage	Store at 4°C short term. Aliquot and store at -20°C long term. Avoid freeze/thaw cycles.
Buffer	PBS, 50% glycerol, 0.05% Proclin 300, 0.05%BSA
Purification	Protein A

Immunogen

Gene Name	CASP6
Alternative Names	CASP6;MCH2;Caspase-6;CASP-6;Apoptotic protease Mch-2
Gene ID	839.0
SwissProt ID	P55212.

Application

Dilution Ratio	IHC 1:200-1:500;WB 1:2000-1:10000;IF 1:200-1:1000;ELISA 1:5000-1:20000;IP 1:50-1:200;
Molecular Weight	Calculated MW:33kD;Observed MW:33kD

Background

Cell localization:Cytoplasm . Nucleus ..This gene encodes a member of the cysteine-aspartic acid protease (caspase) family

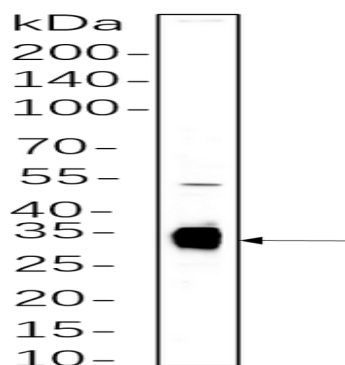
Product Name: Caspase-6 Rabbit Monoclonal Antibody
Catalog #: AMRe21070



of enzymes. Sequential activation of caspases plays a central role in the execution-phase of cell apoptosis. Caspases exist as inactive proenzymes which undergo proteolytic processing at conserved aspartic acid residues to produce two subunits, large and small, that dimerize to form the active enzyme. This protein is processed by caspases 7, 8 and 10, and is thought to function as a downstream enzyme in the caspase activation cascade. Alternative splicing of this gene results in multiple transcript variants that encode different isoforms. [provided by RefSeq, Oct 2015],

Research Area

Image Data



HEK293 cell lysates were separated by 4-20% SDS-PAGE, and the membrane was blotted with primary antibody 1:1000. The HRP-conjugated Goat anti-Rabbit IgG(H + L) antibody was used to detect the antibody.

Note

For research use only.