

Product Name: VCAM1 Rabbit Monoclonal Antibody
Catalog #: AMRe21067



Summary

Production Name	VCAM1 Rabbit Monoclonal Antibody
Description	Rabbit Monoclonal Antibody
Host	Rabbit
Application	WB,IHC,IF,IP,ELISA
Reactivity	Human,Mouse,Rat

Performance

Conjugation	Unconjugated
Modification	Unmodified
Isotype	IgG,Kappa
Clonality	Monoclonal
Form	Liquid
Storage	Store at 4°C short term. Aliquot and store at -20°C long term. Avoid freeze/thaw cycles.
Buffer	PBS, 50% glycerol, 0.05% Proclin 300, 0.05%BSA
Purification	Protein A

Immunogen

Gene Name	VCAM1 L1CAM
Alternative Names	Vascular cell adhesion protein 1;V-CAM 1;VCAM-1;INCAM-100;CD antigen CD106;
Gene ID	7412.0
SwissProt ID	P19320.

Application

Dilution Ratio	IHC 1:500-1:1000;WB 1:2000-1:10000;IF 1:200-1:1000;ELISA 1:5000-1:20000;IP 1:50-1:200;
Molecular Weight	Calculated MW:81kD;Observed MW:110kD

Background

Cell localization:Membrane; Single-pass type I membrane protein..This gene is a member of the Ig superfamily and encodes

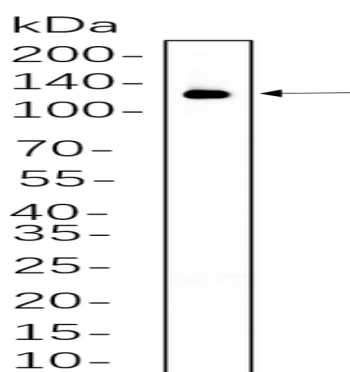
Product Name: VCAM1 Rabbit Monoclonal Antibody
Catalog #: AMRe21067



a cell surface sialoglycoprotein expressed by cytokine-activated endothelium. This type I membrane protein mediates leukocyte-endothelial cell adhesion and signal transduction, and may play a role in the development of atherosclerosis and rheumatoid arthritis. Three alternatively spliced transcripts encoding different isoforms have been described for this gene. [provided by RefSeq, Dec 2010],

Research Area

Image Data



NIH-3T3 whole cell lysates were separated by 10% SDS-PAGE, and the membrane was blotted with primary antibody(1:1000). The HRP-conjugated Goat anti-Rabbit IgG(H + L) antibody was used to detect the antibody.

Note

For research use only.