

Product Name: DARPP-32 Rabbit Monoclonal Antibody
Catalog #: AMRe21057



Summary

Production Name	DARPP-32 Rabbit Monoclonal Antibody
Description	Rabbit Monoclonal Antibody
Host	Rabbit
Application	WB,IHC,IF,IP,ELISA
Reactivity	Human,Mouse,Rat

Performance

Conjugation	Unconjugated
Modification	Unmodified
Isotype	IgG,Kappa
Clonality	Monoclonal
Form	Liquid
Storage	Store at 4°C short term. Aliquot and store at -20°C long term. Avoid freeze/thaw cycles.
Buffer	PBS, 50% glycerol, 0.05% Proclin 300, 0.05%BSA
Purification	Protein A

Immunogen

Gene Name	PPP1R1B
Alternative Names	PPP1R1B;DARPP32;Protein phosphatase 1 regulatory subunit 1B;DARPP-32;Dopamine- and cAMP-regulated neuronal phosphoprotein
Gene ID	84152.0
SwissProt ID	Q9UD71.

Application

Dilution Ratio	IHC 1:200-1:1000;WB 1:2000-1:10000;IF 1:200-1:1000;ELISA 1:5000-1:20000;IP 1:50-1:200;
Molecular Weight	Calculated MW:23kD;Observed MW:32kD

Background

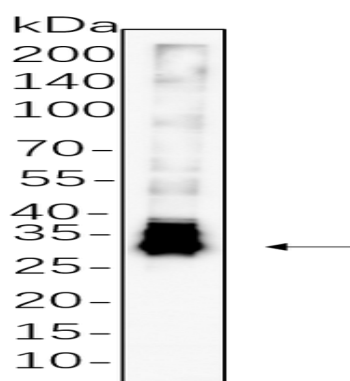
Product Name: DARPP-32 Rabbit Monoclonal Antibody
Catalog #: AMRe21057



Cell localization: Cytoplasm. This gene encodes a bifunctional signal transduction molecule. Dopaminergic and glutamatergic receptor stimulation regulates its phosphorylation and function as a kinase or phosphatase inhibitor. As a target for dopamine, this gene may serve as a therapeutic target for neurologic and psychiatric disorders. Multiple transcript variants encoding different isoforms have been found for this gene. [provided by RefSeq, Oct 2011],

Research Area

Image Data



A431 cell lysates were separated by 4-20% SDS-PAGE, and the membrane was blotted with primary antibody 1:1000. The HRP-conjugated Goat anti-Rabbit IgG(H + L) antibody was used to detect the antibody.

Note

For research use only.