

Product Name: PI3-Kinase p110 β Rabbit Monoclonal Antibody
Catalog #: AMRe21049



Summary

| | |
|------------------------|--|
| Production Name | PI3-Kinase p110 β Rabbit Monoclonal Antibody |
| Description | Rabbit Monoclonal Antibody |
| Host | Rabbit |
| Application | WB,IHC,IF,IP,ELISA |
| Reactivity | Human,Mouse,Rat |

Performance

| | |
|---------------------|--|
| Conjugation | Unconjugated |
| Modification | Unmodified |
| Isotype | IgG,Kappa |
| Clonality | Monoclonal |
| Form | Liquid |
| Storage | Store at 4°C short term. Aliquot and store at -20°C long term. Avoid freeze/thaw cycles. |
| Buffer | PBS, 50% glycerol, 0.05% Proclin 300, 0.05%BSA |
| Purification | Protein A |

Immunogen

| | |
|--------------------------|---------|
| Gene Name | PIK3CB |
| Alternative Names | PIK3C1 |
| Gene ID | 5291.0 |
| SwissProt ID | P42338. |

Application

| | |
|-------------------------|--|
| Dilution Ratio | IHC 1:200-1:1000;WB 1:2000-1:10000;IF 1:200-1:1000;ELISA 1:5000-1:20000;IP 1:50-1:200; |
| Molecular Weight | Calculated MW:123kD;Observed MW:110kD |

Background

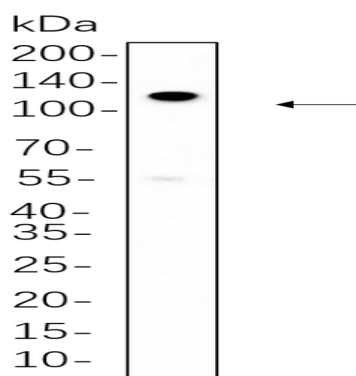
Product Name: PI3-Kinase p110 β Rabbit Monoclonal Antibody
Catalog #: AMRe21049



Cell localization: Cytoplasm . Nucleus . Interaction with PIK3R2 is required for nuclear localization and export.. This gene encodes an isoform of the catalytic subunit of phosphoinositide 3-kinase (PI3K). These kinases are important in signaling pathways involving receptors on the outer membrane of eukaryotic cells and are named for their catalytic subunit. The encoded protein is the catalytic subunit for PI3K β (PI3KB). PI3KB has been shown to be part of the activation pathway in neutrophils which have bound immune complexes at sites of injury or infection. Alternative splicing results in multiple transcript variants. [provided by RefSeq, Dec 2011],

Research Area

Image Data



RT-4 whole cell lysates were separated by 10% SDS-PAGE, and the membrane was blotted with primary antibody(1:1000). The HRP-conjugated Goat anti-Rabbit IgG(H + L) antibody was used to detect the antibody.

Note

For research use only.