

**Product Name: CIRBP Rabbit Monoclonal Antibody**  
**Catalog #: AMRe21045**



## Summary

<b>Production Name</b>	CIRBP Rabbit Monoclonal Antibody
<b>Description</b>	Rabbit Monoclonal Antibody
<b>Host</b>	Rabbit
<b>Application</b>	WB,IF,IP,ELISA
<b>Reactivity</b>	Human,Mouse,Rat

## Performance

<b>Conjugation</b>	Unconjugated
<b>Modification</b>	Unmodified
<b>Isotype</b>	IgG,Kappa
<b>Clonality</b>	Monoclonal
<b>Form</b>	Liquid
<b>Storage</b>	Store at 4°C short term. Aliquot and store at -20°C long term. Avoid freeze/thaw cycles.
<b>Buffer</b>	PBS, 50% glycerol, 0.05% Proclin 300, 0.05%BSA
<b>Purification</b>	Protein A

## Immunogen

<b>Gene Name</b>	CIRBP
<b>Alternative Names</b>	A18HNRNP CIRP
<b>Gene ID</b>	1153.0
<b>SwissProt ID</b>	Q14011.

## Application

<b>Dilution Ratio</b>	WB 1:500-1:2000;IF 1:200-1:1000;ELISA 1:5000-1:20000;IP 1:50-1:200;
<b>Molecular Weight</b>	Calculated MW:19kD;Observed MW:19kD

## Background

Cell localization:Nuclear.function:Seems to play an essential role in cold-induced suppression of cell proliferation.,induction:By cold stress an in response to DNA damage induced by UV irradiation or UV mimetic

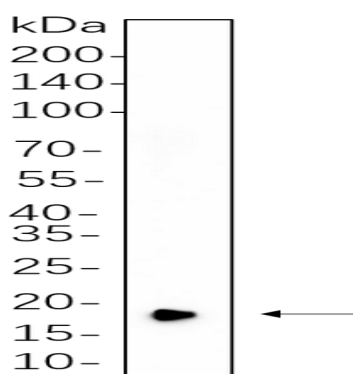
**Product Name: CIRBP Rabbit Monoclonal Antibody**  
**Catalog #: AMRe21045**



agents.,similarity:Contains 1 RRM (RNA recognition motif) domain.,tissue specificity:Ubiquitous.,

## Research Area

## Image Data



Hela cell lysates were separated by 4-20% SDS-PAGE, and the membrane was blotted with primary antibody 1:1000. The HRP-conjugated Goat anti-Rabbit IgG(H + L) antibody was used to detect the antibody.

## Note

For research use only.