

Product Name: Synaptophysin Rabbit Monoclonal Antibody
Catalog #: AMRe21043

Summary

Production Name	Synaptophysin Rabbit Monoclonal Antibody
Description	Rabbit Monoclonal Antibody
Host	Rabbit
Application	WB,IHC,IF,IP,ELISA
Reactivity	Human,Mouse,Rat

Performance

Conjugation	Unconjugated
Modification	Unmodified
Isotype	IgG,Kappa
Clonality	Monoclonal
Form	Liquid
Storage	Store at 4°C short term. Aliquot and store at -20°C long term. Avoid freeze/thaw cycles.
Buffer	PBS, 50% glycerol, 0.05% Proclin 300, 0.05%BSA
Purification	Protein A

Immunogen

Gene Name	SYP
Alternative Names	Major synaptic vesicle protein p38;MRX96;MRXSYP;Synp38;Synaptophysin;Syp;SYPH;SYPH_HUMAN;SypI
Gene ID	6855.0
SwissProt ID	P08247.

Application

Dilution Ratio	IHC 1:2000-1:50000;WB 1:2000-1:10000;IF 1:200-1:1000;ELISA 1:5000-1:20000;IP 1:50-1:200;
Molecular Weight	Calculated MW:34kD;Observed MW:38kD

Product Name: Synaptophysin Rabbit Monoclonal Antibody
Catalog #: AMRe21043

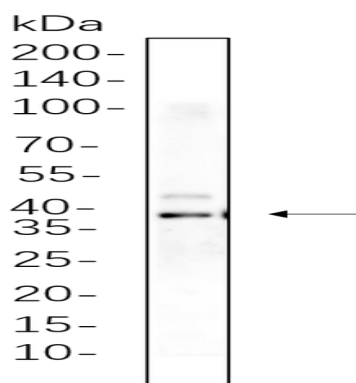


Background

Cell localization: Cytoplasmic. This gene encodes an integral membrane protein of small synaptic vesicles in brain and endocrine cells. The protein also binds cholesterol and is thought to direct targeting of vesicle-associated membrane protein 2 (synaptobrevin) to intracellular compartments. Mutations in this gene are associated with X-linked mental retardation (XLMR). [provided by RefSeq, Aug 2011],

Research Area

Image Data



SH-SY5Y whole cell lysates were separated by 10% SDS-PAGE, and the membrane was blotted with primary antibody(1:1000). The HRP-conjugated Goat anti-Rabbit IgG(H + L) antibody was used to detect the antibody.

Note

For research use only.