

**Product Name: CREB-1 (Phospho Ser133) Rabbit
Monoclonal Antibody
Catalog #: AMRe21032**

Summary

Production Name	CREB-1 (Phospho Ser133) Rabbit Monoclonal Antibody
Description	Rabbit Monoclonal Antibody
Host	Rabbit
Application	WB,IHC,IF,IP,ELISA
Reactivity	Human,Mouse,Rat

Performance

Conjugation	Phospho
Modification	Phosphorylated
Isotype	IgG,Kappa
Clonality	Monoclonal
Form	Liquid
Storage	Store at 4°C short term. Aliquot and store at -20°C long term. Avoid freeze/thaw cycles.
Buffer	PBS, 50% glycerol, 0.05% Proclin 300, 0.05%BSA
Purification	Protein A

Immunogen

Gene Name	CREB1
Alternative Names	CREB1;Cyclic AMP-responsive element-binding protein 1;CREB-1;cAMP-responsive element-binding protein 1
Gene ID	1385.0
SwissProt ID	P16220.

Application

Dilution Ratio	IHC 1:1000-1:4000;WB 1:2000-1:10000;IF 1:200-1:1000;ELISA 1:5000-1:20000;IP 1:50-1:200;
Molecular Weight	Calculated MW:37kD;Observed MW:43kD

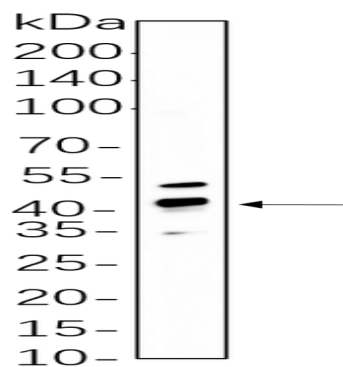
**Product Name: CREB-1 (Phospho Ser133) Rabbit
Monoclonal Antibody
Catalog #: AMRe21032**

Background

Cell localization:Nucleus ..This gene encodes a transcription factor that is a member of the leucine zipper family of DNA binding proteins. This protein binds as a homodimer to the cAMP-responsive element, an octameric palindrome. The protein is phosphorylated by several protein kinases, and induces transcription of genes in response to hormonal stimulation of the cAMP pathway. Alternate splicing of this gene results in several transcript variants encoding different isoforms. [provided by RefSeq, Mar 2016],

Research Area

Image Data



HeLa cell lysates were separated by 4-20% SDS-PAGE, and the membrane was blotted with primary antibody 1:1000. The HRP-conjugated Goat anti-Rabbit IgG(H + L) antibody was used to detect the antibody.

Note

For research use only.