

**Product Name: AGO2 Rabbit Monoclonal Antibody**  
**Catalog #: AMRe21030**



## Summary

<b>Production Name</b>	AGO2 Rabbit Monoclonal Antibody
<b>Description</b>	Rabbit Monoclonal Antibody
<b>Host</b>	Rabbit
<b>Application</b>	WB,IHC,IF,IP,ELISA
<b>Reactivity</b>	Human,Mouse,Rat

## Performance

<b>Conjugation</b>	Unconjugated
<b>Modification</b>	Unmodified
<b>Isotype</b>	IgG,Kappa
<b>Clonality</b>	Monoclonal
<b>Form</b>	Liquid
<b>Storage</b>	Store at 4°C short term. Aliquot and store at -20°C long term. Avoid freeze/thaw cycles.
<b>Buffer</b>	PBS, 50% glycerol, 0.05% Proclin 300, 0.05%BSA
<b>Purification</b>	Protein A

## Immunogen

<b>Gene Name</b>	EIF2C2 AGO2
<b>Alternative Names</b>	
<b>Gene ID</b>	27161.0
<b>SwissProt ID</b>	Q9UKV8.

## Application

<b>Dilution Ratio</b>	IHC 1:2000-1:10000;WB 1:2000-1:10000;IF 1:200-1:1000;ELISA 1:5000-1:20000;IP 1:50-1:200;
<b>Molecular Weight</b>	Calculated MW:97kD;Observed MW:97kD

## Background

Cell localization:Cytoplasm, P-body . Nucleus . Translational repression of mRNAs results in their recruitment to P-bodies.

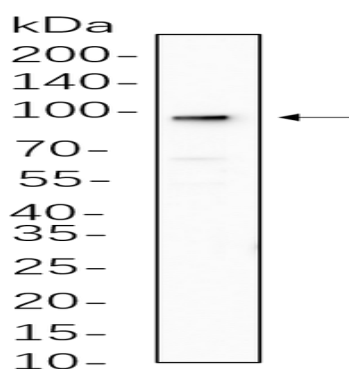
**Product Name: AGO2 Rabbit Monoclonal Antibody**  
**Catalog #: AMRe21030**



Translocation to the nucleus requires IMP8..

## Research Area

## Image Data



A431 cell lysates were separated by 4-20% SDS-PAGE, and the membrane was blotted with primary antibody 1:1000. The HRP-conjugated Goat anti-Rabbit IgG(H + L) antibody was used to detect the antibody.

## Note

For research use only.