

Product Name: SATB2 Rabbit Monoclonal Antibody
Catalog #: AMRe21025



Summary

Production Name	SATB2 Rabbit Monoclonal Antibody
Description	Rabbit Monoclonal Antibody
Host	Rabbit
Application	WB,IHC,IF,IP,ELISA
Reactivity	Human,Mouse,Rat

Performance

Conjugation	Unconjugated
Modification	Unmodified
Isotype	IgG,Kappa
Clonality	Monoclonal
Form	Liquid
Storage	Store at 4°C short term. Aliquot and store at -20°C long term. Avoid freeze/thaw cycles.
Buffer	PBS, 50% glycerol, 0.05% Proclin 300, 0.05%BSA
Purification	Protein A

Immunogen

Gene Name	SATB2
Alternative Names	KIAA1034
Gene ID	23314.0
SwissProt ID	Q9UPW6.

Application

Dilution Ratio	IHC 1:100-1:1000;WB 1:2000-1:10000;IF 1:200-1:1000;ELISA 1:5000-1:20000;IP 1:50-1:200;
Molecular Weight	Calculated MW:83kD;Observed MW:100kD

Background

Cell localization:Nucleus matrix ..This gene encodes a DNA binding protein that specifically binds nuclear matrix attachment

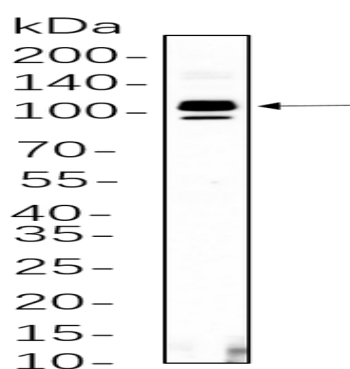
Product Name: SATB2 Rabbit Monoclonal Antibody
Catalog #: AMRe21025



regions. The encoded protein is involved in transcription regulation and chromatin remodeling. Defects in this gene are associated with isolated cleft palate and mental retardation. Alternate splicing results in multiple transcript variants that encode the same protein. [provided by RefSeq, Feb 2010],

Research Area

Image Data



THP-1 whole cell lysates were separated by 10% SDS-PAGE, and the membrane was blotted with primary antibody(1:1000).
The HRP-conjugated Goat anti-Rabbit IgG(H + L) antibody was used to detect the antibody.

Note

For research use only.