

Summary

Production Name	Nrf2 Rabbit Monoclonal Antibody
Description	Rabbit Monoclonal Antibody
Host	Rabbit
Application	WB,IHC,IF,IP,ELISA
Reactivity	Human,Mouse,Rat

Performance

Conjugation	Unconjugated
Modification	Unmodified
Isotype	IgG,Kappa
Clonality	Monoclonal
Form	Liquid
Storage	Store at 4°C short term. Aliquot and store at -20°C long term. Avoid freeze/thaw cycles.
Buffer	PBS, 50% glycerol, 0.05% Proclin 300, 0.05%BSA
Purification	Protein A

Immunogen

Gene Name	NFE2L2 NRF2
Alternative Names	Nuclear factor erythroid 2-related factor 2;NF-E2-related factor 2;NFE2-related factor 2;HEBP1;Nuclear factor, erythroid derived 2, like 2;
Gene ID	4780.0
SwissProt ID	Q16236.

Application

Dilution Ratio	IHC 1:1000-1:5000;WB 1:2000-1:10000;IF 1:200-1:1000;ELISA 1:5000-1:20000;IP 1:50-1:200;
Molecular Weight	Calculated MW:68kD;Observed MW:100kD

Background

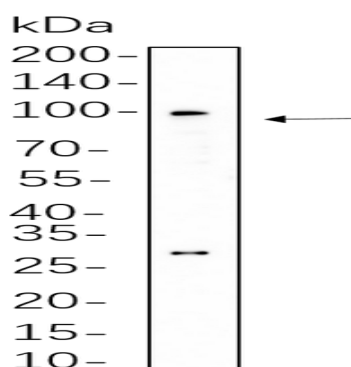
Product Name: Nrf2 Rabbit Monoclonal Antibody
Catalog #: AMRe21024



Cell localization: Cytoplasmic, Nuclear. nuclear factor, erythroid 2 like 2 (NFE2L2) Homo sapiens This gene encodes a transcription factor which is a member of a small family of basic leucine zipper (bZIP) proteins. The encoded transcription factor regulates genes which contain antioxidant response elements (ARE) in their promoters; many of these genes encode proteins involved in response to injury and inflammation which includes the production of free radicals. Multiple transcript variants encoding different isoforms have been characterized for this gene. [provided by RefSeq, Sep 2015],

Research Area

Image Data



C6 whole cell lysates were separated by 10% SDS-PAGE, and the membrane was blotted with primary antibody (1:1000). The HRP-conjugated Goat anti-Rabbit IgG(H + L) antibody was used to detect the antibody.

Note

For research use only.