

Product Name: Claudin 3 Rabbit Monoclonal Antibody
Catalog #: AMRe21023



Summary

Production Name	Claudin 3 Rabbit Monoclonal Antibody
Description	Rabbit Monoclonal Antibody
Host	Rabbit
Application	WB,IHC,IF,IP,ELISA
Reactivity	Human,Mouse,Rat

Performance

Conjugation	Unconjugated
Modification	Unmodified
Isotype	IgG,Kappa
Clonality	Monoclonal
Form	Liquid
Storage	Store at 4°C short term. Aliquot and store at -20°C long term. Avoid freeze/thaw cycles.
Buffer	PBS, 50% glycerol, 0.05% Proclin 300, 0.05%BSA
Purification	Protein A

Immunogen

Gene Name	CLDN3 C7orf1;Claudin-3;Claudin3;CLD3_HUMAN;CLDN 3;Cldn3;Clostridium perfringens enterotoxin receptor 2;CPE R2;CPE receptor 2;CPE-R 2;CPE-receptor 2;CPETR 2;CPETR2;HRVP 1;HRVP1;Rat ventral prostate 1 like protein;Rat ventral prostate.1 protein homolog;RVP1;Ventral prostate.1 like protein;Ventral prostate.1 protein homolog
Alternative Names	
Gene ID	1365.0
SwissProt ID	O15551.

Application

Dilution Ratio	IHC 1:200-1:1000;WB 1:2000-1:10000;IF 1:200-1:1000;ELISA 1:5000-1:20000;IP 1:50-1:200;
-----------------------	--

Product Name: Claudin 3 Rabbit Monoclonal Antibody
Catalog #: AMRe21023



Molecular Weight

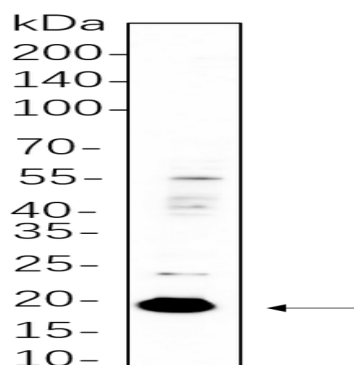
Calculated MW:23kD;Observed MW:20kD

Background

Cell localization:Membranous.Tight junctions represent one mode of cell-to-cell adhesion in epithelial or endothelial cell sheets, forming continuous seals around cells and serving as a physical barrier to prevent solutes and water from passing freely through the paracellular space. These junctions are comprised of sets of continuous networking strands in the outwardly facing cytoplasmic leaflet, with complementary grooves in the inwardly facing extracytoplasmic leaflet. The protein encoded by this intronless gene, a member of the claudin family, is an integral membrane protein and a component of tight junction strands. It is also a low-affinity receptor for Clostridium perfringens enterotoxin, and shares aa sequence similarity with a putative apoptosis-related protein found in rat. [provided by RefSeq, Jul 2008],

Research Area

Image Data



HT-29 whole cell lysates were separated by 10% SDS-PAGE, and the membrane was blotted with primary antibody(1:1000).

The HRP-conjugated Goat anti-Rabbit IgG(H + L) antibody was used to detect the antibody.

Note

For research use only.