

Product Name: HES1 Rabbit Monoclonal Antibody
Catalog #: AMRe21016



Summary

Production Name	HES1 Rabbit Monoclonal Antibody
Description	Rabbit Monoclonal Antibody
Host	Rabbit
Application	WB,IHC,IF,IP,ELISA
Reactivity	Human,Mouse,Rat

Performance

Conjugation	Unconjugated
Modification	Unmodified
Isotype	IgG,Kappa
Clonality	Monoclonal
Form	Liquid
Storage	Store at 4°C short term. Aliquot and store at -20°C long term. Avoid freeze/thaw cycles.
Buffer	PBS, 50% glycerol, 0.05% Proclin 300, 0.05%BSA
Purification	Protein A

Immunogen

Gene Name	HES1
Alternative Names	BHLHB39 HL HRY
Gene ID	3280.0
SwissProt ID	Q14469.

Application

Dilution Ratio	IHC 1:4000-1:20000;WB 1:2000-1:10000;IF 1:200-1:1000;ELISA 1:5000-1:20000;IP 1:50-1:200;
Molecular Weight	Calculated MW:30kD;Observed MW:30kD

Background

Cell localization:Nucleus..This protein belongs to the basic helix-loop-helix family of transcription factors. It is a

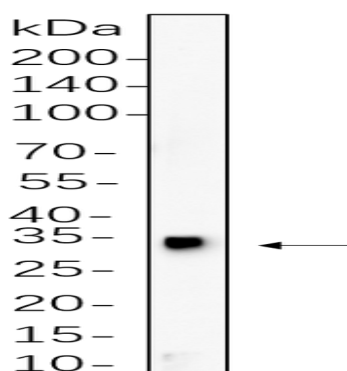
Product Name: HES1 Rabbit Monoclonal Antibody
Catalog #: AMRe21016



transcriptional repressor of genes that require a bHLH protein for their transcription. The protein has a particular type of basic domain that contains a helix interrupting protein that binds to the N-box rather than the canonical E-box. [provided by RefSeq, Jul 2008],

Research Area

Image Data



C6 cell lysates were separated by 4-20% SDS-PAGE, and the membrane was blotted with primary antibody 1:1000. The HRP-conjugated Goat anti-Rabbit IgG(H + L) antibody was used to detect the antibody.

Note

For research use only.