

**Product Name: Smad2 (19V12) Rabbit Monoclonal Antibody**  
**Catalog #: AMRe17989**

---

## Summary

<b>Production Name</b>	Smad2 (19V12) Rabbit Monoclonal Antibody
<b>Description</b>	Rabbit Monoclonal Antibody
<b>Host</b>	Rabbit
<b>Application</b>	WB,ICC/IF,FC
<b>Reactivity</b>	Human,Mouse,Rat

## Performance

<b>Conjugation</b>	Unconjugated
<b>Modification</b>	Unmodified
<b>Isotype</b>	IgG
<b>Clonality</b>	Monoclonal
<b>Form</b>	Liquid
<b>Storage</b>	Store at 4°C short term. Aliquot and store at -20°C long term. Avoid freeze/thaw cycles. Rabbit IgG in phosphate buffered saline , pH 7.4, 150mM NaCl, 0.02% New type
<b>Buffer</b>	preservative N and 50% glycerol. Store at +4°C short term. Store at -20°C long term. Avoid freeze / thaw cycle.
<b>Purification</b>	Affinity purification

## Immunogen

<b>Gene Name</b>	SMAD2
<b>Alternative Names</b>	JV18-1; MADH2; MADR2; Mad-related protein 2; Mothers against DPP homolog 2; Smad 2;
<b>Gene ID</b>	4087.0
<b>SwissProt ID</b>	Q15796.

## Application

<b>Dilution Ratio</b>	WB 1:1000, ICC/IF 1:100-1:200, FCM 1:100
<b>Molecular Weight</b>	52kDa

**Product Name: Smad2 (19V12) Rabbit Monoclonal Antibody**  
**Catalog #: AMRe17989**

---

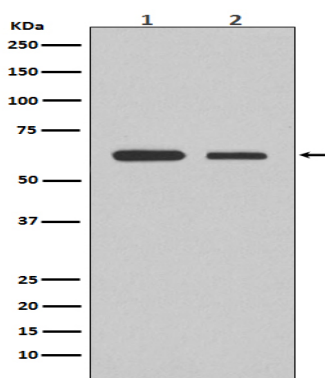


## Background

The protein encoded by this gene belongs to the SMAD, a family of proteins similar to the gene products of the *Drosophila* gene 'mothers against decapentaplegic' (Mad) and the *C. elegans* gene Sma. SMAD proteins are signal transducers and transcriptional modulators that mediate multiple signaling pathways. Receptor-regulated SMAD (R-SMAD) that is an intracellular signal transducer and transcriptional modulator activated by TGF-beta (transforming growth factor) and activin type 1 receptor kinases. Binds the TRE element in the promoter region of many genes that are regulated by TGF-beta and, on formation of the SMAD2/SMAD4 complex, activates transcription. May act as a tumor suppressor in colorectal carcinoma. Positively regulates PDPK1 kinase activity by stimulating its dissociation from the 14-3-3 protein YWHAQ which acts as a negative regulator.

## Research Area

## Image Data



Western blot analysis of Smad2 expression in (1) Jurkat cell lysate;(2) RAW264.7 cell lysate.

## Note

For research use only.