

Product Name: PSD95 (13H1) Rabbit Monoclonal Antibody
Catalog #: AMRe16592

Summary

Production Name	PSD95 (13H1) Rabbit Monoclonal Antibody
Description	Rabbit Monoclonal Antibody
Host	Rabbit
Application	WB,IHC-P,IP,IF-P
Reactivity	Human,Mouse,Rat

Performance

Conjugation	Unconjugated
Modification	Unmodified
Isotype	IgG
Clonality	Monoclonal
Form	Liquid
Storage	Store at 4°C short term. Aliquot and store at -20°C long term. Avoid freeze/thaw cycles.
Buffer	Supplied in 50mM Tris-Glycine(pH 7.4), 0.15M NaCl, 40%Glycerol, 0.01% New type preservative N and 0.05% BSA.
Purification	Affinity purification

Immunogen

Gene Name	DLG4
Alternative Names	DLG4; Disks large homolog 4; PSD95; SAP90; Synapse associated protein 90;
Gene ID	1742.0
SwissProt ID	P78352. Recombinant protein of human PSD95

Application

Dilution Ratio	WB 1:1000, IHC-P/IF-P 1:100, IP 1:20
Molecular Weight	81kDa

Background

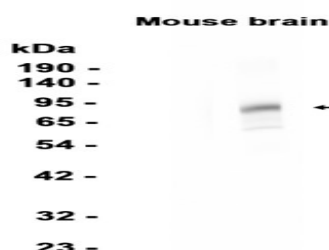
Product Name: PSD95 (13H1) Rabbit Monoclonal Antibody
Catalog #: AMRe16592



Interacts with the cytoplasmic tail of NMDA receptor subunits and shaker-type potassium channels. Required for synaptic plasticity associated with NMDA receptor signaling. Overexpression or depletion of DLG4 changes the ratio of excitatory to inhibitory synapses in hippocampal neurons. Postsynaptic scaffolding protein that plays a critical role in synaptogenesis and synaptic plasticity by providing a platform for the postsynaptic clustering of crucial synaptic proteins. Interacts with the cytoplasmic tail of NMDA receptor subunits and shaker-type potassium channels. Required for synaptic plasticity associated with NMDA receptor signaling. Overexpression or depletion of DLG4 changes the ratio of excitatory to inhibitory synapses in hippocampal neurons. May reduce the amplitude of ASIC3 acid-evoked currents by retaining the channel intracellularly. May regulate the intracellular trafficking of ADR1B. Also regulates AMPA-type glutamate receptor (AMPA) immobilization at postsynaptic density keeping the channels in an activated state in the presence of glutamate and preventing synaptic depression.

Research Area

Image Data



Western blot analysis of extracts from Mouse brain tissue using RM4408 at 1:1000.

Note

For research use only.