

Product Name: PLAT (12E12) Rabbit Monoclonal Antibody
Catalog #: AMRe16244

Summary

| | |
|------------------------|---|
| Production Name | PLAT (12E12) Rabbit Monoclonal Antibody |
| Description | Rabbit Monoclonal Antibody |
| Host | Rabbit |
| Application | WB,IHC-P,IF-P |
| Reactivity | Human,Mouse,Rat |

Performance

| | |
|---------------------|--|
| Conjugation | Unconjugated |
| Modification | Unmodified |
| Isotype | IgG |
| Clonality | Monoclonal |
| Form | Liquid |
| Storage | Store at 4°C short term. Aliquot and store at -20°C long term. Avoid freeze/thaw cycles. |
| Buffer | Rabbit IgG in phosphate buffered saline , pH 7.4, 150mM NaCl, 0.02% New type preservative N and 50% glycerol. Store at +4°C short term. Store at -20°C long term. Avoid freeze / thaw cycle. |
| Purification | Affinity purification |

Immunogen

| | |
|--------------------------|--|
| Gene Name | PLAT |
| Alternative Names | TPA; T-PA; TPA1; PLAT; Tissue plasminogen activator; |
| Gene ID | 5327.0 |
| SwissProt ID | P00750. |

Application

| | |
|-------------------------|---|
| Dilution Ratio | WB 1:1000-1:5000, IHC-P/IF-P 1:100-1:1000 |
| Molecular Weight | 63kDa |

Product Name: PLAT (12E12) Rabbit Monoclonal Antibody
Catalog #: AMRe16244

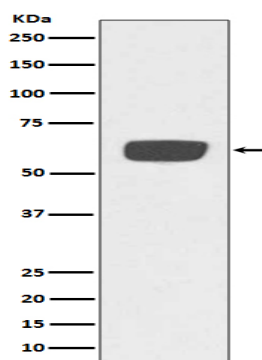


Background

This gene encodes tissue-type plasminogen activator, a secreted serine protease which converts the proenzyme plasminogen to plasmin, a fibrinolytic enzyme. Tissue-type plasminogen activator is synthesized as a single chain which is cleaved by plasmin to a two chain disulfide linked protein. This enzyme plays a role in cell migration and tissue remodeling. Converts the abundant, but inactive, zymogen plasminogen to plasmin by hydrolyzing a single Arg-Val bond in plasminogen. By controlling plasmin-mediated proteolysis, it plays an important role in tissue remodeling and degradation, in cell migration and many other physiopathological events. During oocyte activation, plays a role in cortical granule reaction in the zona reaction, which contributes to the block to polyspermy (By similarity).

Research Area

Image Data



Western blot analysis of PLAT expression in human plasma lysate.

Note

For research use only.