

**Product Name: PI 3 Kinase Class 3 (11Y1) Rabbit
Monoclonal Antibody
Catalog #: AMRe16090**

Summary

Production Name	PI 3 Kinase Class 3 (11Y1) Rabbit Monoclonal Antibody
Description	Rabbit Monoclonal Antibody
Host	Rabbit
Application	WB,IHC-P,IF-P
Reactivity	Human,Mouse,Rat

Performance

Conjugation	Unconjugated
Modification	Unmodified
Isotype	IgG
Clonality	Monoclonal
Form	Liquid
Storage	Store at 4°C short term. Aliquot and store at -20°C long term. Avoid freeze/thaw cycles. Rabbit IgG in phosphate buffered saline , pH 7.4, 150mM NaCl, 0.02% New type
Buffer	preservative N and 50% glycerol. Store at +4°C short term. Store at -20°C long term. Avoid freeze / thaw cycle.
Purification	Affinity purification

Immunogen

Gene Name	PIK3C3
Alternative Names	PI3-kinase type 3; PI3K type 3; PI3 kinase type 3; Phosphatidylinositol 3-kinase p100 subunit; Phosphoinositide-3-kinase class 3; hVps34; PIK3C3; Vps 34; Vps34
Gene ID	5289.0
SwissProt ID	Q8NEB9.

Application

Dilution Ratio	WB 1:1000-1:5000, IHC-P/IF-P 1:50-1:100
Molecular Weight	102kDa

**Product Name: PI 3 Kinase Class 3 (11Y1) Rabbit
Monoclonal Antibody
Catalog #: AMRe16090**

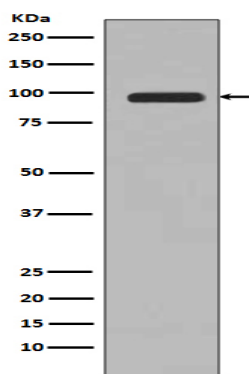


Background

Catalytic subunit of the PI3K complex that mediates formation of phosphatidylinositol 3-phosphate. Involved in the transport of lysosomal enzyme precursors to lysosomes. Required for the abscission step in cytokinesis. Catalytic subunit of the PI3K complex that mediates formation of phosphatidylinositol 3-phosphate; different complex forms are believed to play a role in multiple membrane trafficking pathways: PI3KC3-C1 is involved in initiation of autophagosomes and PI3KC3-C2 in maturation of autophagosomes and endocytosis. As part of PI3KC3-C1, promotes endoplasmic reticulum membrane curvature formation prior to vesicle budding (PubMed: <http://www.uniprot.org/citations/32690950> target="_blank">32690950). Involved in regulation of degradative endocytic trafficking and required for the abscission step in cytokinesis, probably in the context of PI3KC3-C2 (PubMed: <http://www.uniprot.org/citations/20643123> target="_blank">20643123, PubMed: <http://www.uniprot.org/citations/20208530> target="_blank">20208530). Involved in the transport of lysosomal enzyme precursors to lysosomes. Required for transport from early to late endosomes (By similarity).

Research Area

Image Data



Western blot analysis of PI 3 Kinase Class 3 expression in 293T cell lysate.

Note

For research use only.