

Product Name: KLKB1 (6P10) Rabbit Monoclonal Antibody
Catalog #: AMRe13077

Summary

Production Name	KLKB1 (6P10) Rabbit Monoclonal Antibody
Description	Rabbit Monoclonal Antibody
Host	Rabbit
Application	WB,IHC-P
Reactivity	Human

Performance

Conjugation	Unconjugated
Modification	Unmodified
Isotype	IgG
Clonality	Monoclonal
Form	Liquid
Storage	Store at 4°C short term. Aliquot and store at -20°C long term. Avoid freeze/thaw cycles. Rabbit IgG in phosphate buffered saline , pH 7.4, 150mM NaCl, 0.02% New type
Buffer	preservative N and 50% glycerol. Store at +4°C short term. Store at -20°C long term. Avoid freeze / thaw cycle.
Purification	Affinity purification

Immunogen

Gene Name	KLKB1
Alternative Names	Fletcher factor; kallikrein B plasma; Kallikrein B1; Kininogenin; KLK3; KLKB1; PKK; PKKD; Plasma kallikrein light chain; PPK; Prekallikrein;
Gene ID	3818.0
SwissProt ID	P03952.

Application

Dilution Ratio	WB 1:1000-1:5000, IHC-P/IF-P 1:50-1:100
Molecular Weight	71kDa

Product Name: KLKB1 (6P10) Rabbit Monoclonal Antibody
Catalog #: AMRe13077

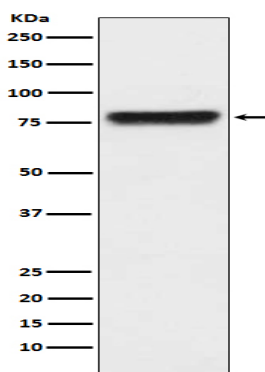


Background

The enzyme cleaves Lys-Arg and Arg-Ser bonds. It activates, in a reciprocal reaction, factor XII after its binding to a negatively charged surface. It also releases bradykinin from HMW kininogen and may also play a role in the renin-angiotensin system by converting prorenin into renin. The enzyme cleaves Lys-Arg and Arg-Ser bonds. It activates, in a reciprocal reaction, factor XII after its binding to a negatively charged surface. It also releases bradykinin from HMW kininogen and may also play a role in the renin-angiotensin system by converting prorenin into renin.

Research Area

Image Data



Western blot analysis of KLKB1 expression in human plasma lysate.

Note

For research use only.