

Product Name: KIF5B (9K4) Rabbit Monoclonal Antibody
Catalog #: AMRe13018

Summary

Production Name	KIF5B (9K4) Rabbit Monoclonal Antibody
Description	Rabbit Monoclonal Antibody
Host	Rabbit
Application	WB,IHC-P,ICC/IF,IP,IF-P
Reactivity	Human,Mouse,Rat

Performance

Conjugation	Unconjugated
Modification	Unmodified
Isotype	IgG
Clonality	Monoclonal
Form	Liquid
Storage	Store at 4°C short term. Aliquot and store at -20°C long term. Avoid freeze/thaw cycles.
Buffer	Supplied in 50mM Tris-Glycine(pH 7.4), 0.15M NaCl, 40%Glycerol, 0.01% New type preservative N and 0.05% BSA.
Purification	Affinity purification

Immunogen

Gene Name	KIF5B
Alternative Names	KIF5B; Kinesin1; KINH; KNS; KNS1; UKHC;
Gene ID	3799.0
SwissProt ID	P33176. A synthetic peptide of human KIF5B

Application

Dilution Ratio	WB 1:1000-1:5000, IHC-P/IF-P 1:20-1:100, ICC/IF 1:20-1:100, IP 1:20-1:50
Molecular Weight	110kDa

Background

Microtubule-dependent motor required for normal distribution of mitochondria and lysosomes. Microtubule-dependent

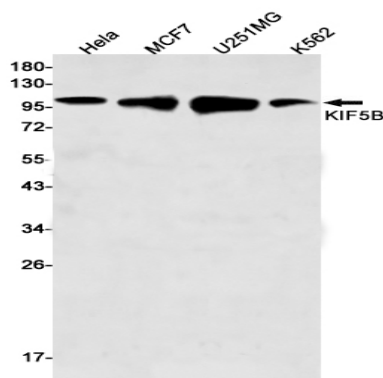
Product Name: KIF5B (9K4) Rabbit Monoclonal Antibody
Catalog #: AMRe13018



motor required for normal distribution of mitochondria and lysosomes. Can induce formation of neurite-like membrane protrusions in non-neuronal cells in a ZFYVE27-dependent manner (By similarity). Regulates centrosome and nuclear positioning during mitotic entry. During the G2 phase of the cell cycle in a BICD2- dependent manner, antagonizes dynein function and drives the separation of nuclei and centrosomes (PubMed: [20386726](http://www.uniprot.org/citations/20386726)). Required for anterograde axonal transportation of MAPK8IP3/JIP3 which is essential for MAPK8IP3/JIP3 function in axon elongation (By similarity). Through binding with PLEKHM2 and ARL8B, directs lysosome movement toward microtubule plus ends (Probable). Involved in NK cell-mediated cytotoxicity. Drives the polarization of cytolytic granules and microtubule-organizing centers (MTOCs) toward the immune synapse between effector NK lymphocytes and target cells (PubMed: [24088571](http://www.uniprot.org/citations/24088571)).

Research Area

Image Data



Western blot detection of KIF5B in HeLa,MCF7,U251MG,K562 cell lysates using KIF5B antibody(1:500 diluted).

Note

For research use only.