

Product Name: Human IgG (3R17) Rabbit Monoclonal Antibody
Catalog #: AMRe12279



Summary

Production Name	Human IgG (3R17) Rabbit Monoclonal Antibody
Description	Rabbit Monoclonal Antibody
Host	Rabbit
Application	WB,IHC-P,IF-P
Reactivity	Human

Performance

Conjugation	Unconjugated
Modification	Unmodified
Isotype	IgG
Clonality	Monoclonal
Form	Liquid
Storage	Store at 4°C short term. Aliquot and store at -20°C long term. Avoid freeze/thaw cycles. Rabbit IgG in phosphate buffered saline , pH 7.4, 150mM NaCl, 0.02% New type
Buffer	preservative N and 50% glycerol. Store at +4°C short term. Store at -20°C long term. Avoid freeze / thaw cycle.
Purification	Affinity purification

Immunogen

Gene Name	G1m marker; G2m marker; G3m marker; G4m marker; HDC; Heavy chain disease protein; Human immunoglobulin G; Ig gamma 1 chain C region; Ig gamma 2 chain C region; Ig gamma 3 chain C region; Ig gamma 4 chain C region; IgG heavy chain locus; IGHG1; IGHG2; IGHG3; IGHG4;
Alternative Names	
Gene ID	
SwissProt ID	P01857/P01859/P01860/P01861.

Application

Dilution Ratio	WB 1:1000-1:5000, IHC-P/IF-P 1:100-1:200
-----------------------	--

Product Name: Human IgG (3R17) Rabbit Monoclonal Antibody
Catalog #: AMRe12279



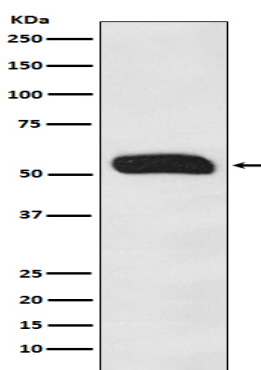
Molecular Weight 52kDa

Background

IgG is a monomeric immunoglobulin, built of two heavy chains gamma and two light chains. Each molecule has two antigen binding sites. This is the most abundant immunoglobulin and is approximately equally distributed in blood and in tissue liquids, constituting 75% of serum immunoglobulins in humans.

Research Area

Image Data



Western blot analysis of Human IgG expression in Human plasma lysate.

Note

For research use only.