

**Product Name: gamma Synuclein (4A4) Rabbit
Monoclonal Antibody
Catalog #: AMRe11288**

Summary

Production Name	gamma Synuclein (4A4) Rabbit Monoclonal Antibody
Description	Rabbit Monoclonal Antibody
Host	Rabbit
Application	WB,IHC-P,ICC/IF,FC,IP,IF-P
Reactivity	Human,Rat

Performance

Conjugation	Unconjugated
Modification	Unmodified
Isotype	IgG
Clonality	Monoclonal
Form	Liquid
Storage	Store at 4°C short term. Aliquot and store at -20°C long term. Avoid freeze/thaw cycles. Rabbit IgG in phosphate buffered saline , pH 7.4, 150mM NaCl, 0.02% New type
Buffer	preservative N and 50% glycerol. Store at +4°C short term. Store at -20°C long term. Avoid freeze / thaw cycle.
Purification	Affinity purification

Immunogen

Gene Name	SNCG
Alternative Names	BCSG1; Breast cancer specific gene 1 protein; Gamma synuclein; Persyn; PRSN; SNCG; SR; Synoretin; Synuclein gamma;
Gene ID	6623.0
SwissProt ID	O76070.

Application

Dilution Ratio	WB 1:1000, IHC-P/IF-P 1:100, ICC/IF 1:100, FCM 1:20, IP 1:20
Molecular Weight	13kDa

**Product Name: gamma Synuclein (4A4) Rabbit
Monoclonal Antibody
Catalog #: AMRe11288**

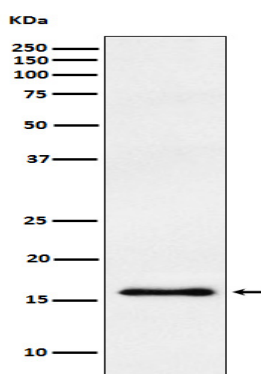


Background

Plays a role in neurofilament network integrity. May be involved in modulating axonal architecture during development and in the adult. In vitro, increases the susceptibility of neurofilament-H to calcium-dependent proteases (By similarity). Plays a role in neurofilament network integrity. May be involved in modulating axonal architecture during development and in the adult. In vitro, increases the susceptibility of neurofilament-H to calcium-dependent proteases (By similarity). May also function in modulating the keratin network in skin. Activates the MAPK and Elk-1 signal transduction pathway (By similarity).

Research Area

Image Data



Western blot analysis of gamma Synuclein expression in human fetal brain lysate.

Note

For research use only.