

Product Name: Cyclin E1 (4X19) Rabbit Monoclonal Antibody
Catalog #: AMRe09594



Summary

Production Name	Cyclin E1 (4X19) Rabbit Monoclonal Antibody
Description	Rabbit Monoclonal Antibody
Host	Rabbit
Application	WB,IHC-P,ICC/IF,FC,IP
Reactivity	Human

Performance

Conjugation	Unconjugated
Modification	Unmodified
Isotype	IgG
Clonality	Monoclonal
Form	Liquid
Storage	Store at 4°C short term. Aliquot and store at -20°C long term. Avoid freeze/thaw cycles.
Buffer	Rabbit IgG in phosphate buffered saline , pH 7.4, 150mM NaCl, 0.02% New type preservative N and 50% glycerol. Store at +4°C short term. Store at -20°C long term. Avoid freeze / thaw cycle.
Purification	Affinity purification

Immunogen

Gene Name	CCNE1
Alternative Names	CCNE; CCNE1; cyclin E1; cyclin Es; cyclin Et; G1/S-specific cyclin-E1
Gene ID	898.0
SwissProt ID	P24864.

Application

Dilution Ratio	WB 1:1000, IHC-P/IF-P 1:200-1:2000, ICC/IF 1:100-1:500, FCM 1:20, IP 1:20-1:50
Molecular Weight	47kDa

Product Name: Cyclin E1 (4X19) Rabbit Monoclonal Antibody
Catalog #: AMRe09594

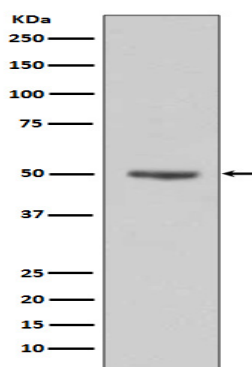


Background

Essential for the control of the cell cycle at the G1/S (start) transition. a member of the highly conserved cyclin family, whose members are characterized by a dramatic periodicity in protein abundance through the cell cycle. Cyclins function as regulators of CDK kinases. Essential for the control of the cell cycle at the G1/S (start) transition.

Research Area

Image Data



Western blot analysis of Cyclin E1 expression in HeLa cell lysates.

Note

For research use only.