

**Product Name: CTLA4 (CD152) (14H2) Rabbit
Monoclonal Antibody
Catalog #: AMRe09507**

Summary

Production Name	CTLA4 (CD152) (14H2) Rabbit Monoclonal Antibody
Description	Rabbit Monoclonal Antibody
Host	Rabbit
Application	WB,IHC-P,FC,IP,IF-P
Reactivity	Human,Mouse

Performance

Conjugation	Unconjugated
Modification	Unmodified
Isotype	IgG
Clonality	Monoclonal
Form	Liquid
Storage	Store at 4°C short term. Aliquot and store at -20°C long term. Avoid freeze/thaw cycles. Rabbit IgG in phosphate buffered saline , pH 7.4, 150mM NaCl, 0.02% New type
Buffer	preservative N and 50% glycerol. Store at +4°C short term. Store at -20°C long term. Avoid freeze / thaw cycle.
Purification	Affinity purification

Immunogen

Gene Name	CTLA4
Alternative Names	CTLA4;CD;CD152;CELIAC3;CTLA-4;GRD4;GSE;ICOS;IDDM12;
Gene ID	1493.0
SwissProt ID	P16410.

Application

Dilution Ratio	WB 1:1000, IHC-P/IF-P 1:200-1:500, FCM 1:200-1:500, IP 1:20-1:50
Molecular Weight	25kDa

**Product Name: CTLA4 (CD152) (14H2) Rabbit
Monoclonal Antibody
Catalog #: AMRe09507**

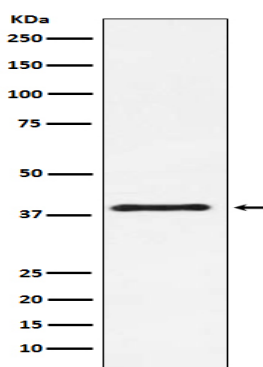


Background

Inhibitory receptor acting as a major negative regulator of T-cell responses. The affinity of CTLA4 for its natural B7 family ligands, CD80 and CD86, is considerably stronger than the affinity of their cognate stimulatory coreceptor CD28. Inhibitory receptor acting as a major negative regulator of T-cell responses. The affinity of CTLA4 for its natural B7 family ligands, CD80 and CD86, is considerably stronger than the affinity of their cognate stimulatory coreceptor CD28.

Research Area

Image Data



Western blot analysis of CTLA4 (CD152) expression in NIH/3T3 cell lysate.

Note

For research use only.