

**Product Name: Collagen I (7F14) Rabbit Monoclonal Antibody**  
**Catalog #: AMRe09207**

---



## Summary

<b>Production Name</b>	Collagen I (7F14) Rabbit Monoclonal Antibody
<b>Description</b>	Rabbit Monoclonal Antibody
<b>Host</b>	Rabbit
<b>Application</b>	WB
<b>Reactivity</b>	Human, Mouse, Rat

## Performance

<b>Conjugation</b>	Unconjugated
<b>Modification</b>	Unmodified
<b>Isotype</b>	IgG
<b>Clonality</b>	Monoclonal
<b>Form</b>	Liquid
<b>Storage</b>	Store at 4°C short term. Aliquot and store at -20°C long term. Avoid freeze/thaw cycles. Rabbit IgG in phosphate buffered saline , pH 7.4, 150mM NaCl, 0.02% New type
<b>Buffer</b>	preservative N and 50% glycerol. Store at +4°C short term. Store at -20°C long term. Avoid freeze / thaw cycle.
<b>Purification</b>	Affinity purification

## Immunogen

<b>Gene Name</b>	
<b>Alternative Names</b>	Collagen alpha-1(I) chain, Alpha-1 type I collagen, COL1A1;
<b>Gene ID</b>	
<b>SwissProt ID</b>	P02452/P08123.

## Application

<b>Dilution Ratio</b>	WB 1:1000
<b>Molecular Weight</b>	139kDa

**Product Name: Collagen I (7F14) Rabbit Monoclonal Antibody**  
**Catalog #: AMRe09207**

---

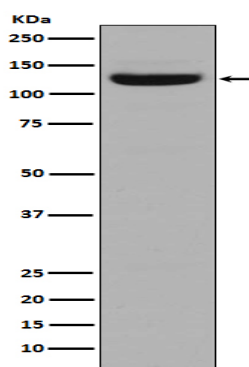


## Background

This gene encodes one of the chains for type I collagen, the fibrillar collagen found in most connective tissues. Mutations in this gene are associated with osteogenesis imperfecta, Ehlers-Danlos syndrome, idiopathic osteoporosis, and atypical Marfan syndrome.

## Research Area

## Image Data



Western blot analysis of Collagen I in Human stomach tissue lysate.

## Note

For research use only.