

Product Name: CDC7 (17K15) Rabbit Monoclonal Antibody
Catalog #: AMRe08530

Summary

Production Name	CDC7 (17K15) Rabbit Monoclonal Antibody
Description	Rabbit Monoclonal Antibody
Host	Rabbit
Application	WB,FC
Reactivity	Human,Mouse,Rat

Performance

Conjugation	Unconjugated
Modification	Unmodified
Isotype	IgG
Clonality	Monoclonal
Form	Liquid
Storage	Store at 4°C short term. Aliquot and store at -20°C long term. Avoid freeze/thaw cycles. Rabbit IgG in phosphate buffered saline , pH 7.4, 150mM NaCl, 0.02% New type
Buffer	preservative N and 50% glycerol. Store at +4°C short term. Store at -20°C long term. Avoid freeze / thaw cycle.
Purification	Affinity purification

Immunogen

Gene Name	CDC7
Alternative Names	Cell division cycle 7-related protein kinase, EC 2.7.11.1, CDC7-related kinase, HsCdc7, huCdc7, CDC7, CDC7L1; Hsk1 ; CDC7 kinase
Gene ID	8317.0
SwissProt ID	O00311.

Application

Dilution Ratio	WB 1:1000, FCM 1:20-1:100
Molecular Weight	64kDa

Product Name: CDC7 (17K15) Rabbit Monoclonal Antibody
Catalog #: AMRe08530

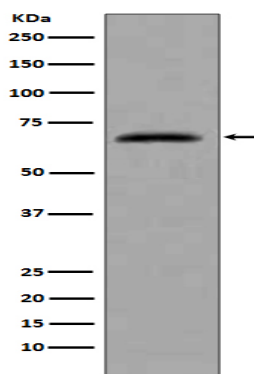


Background

DNA replication in eukaryotic cells is dependent on the phosphorylation of the pre-replicative complex (preRC) at the origin of replication. Two complexes of proteins mediate this event, the cyclin dependent kinase (CDK) complex, and the Cdc7 kinase-ASK complex. Human Cdc7 kinase consists of 574 amino acids with a molecular weight of 55 kDa. The activity of Cdc7 kinase oscillates during cell cycle. The major targets of Cdc7 kinase are proteins that belong to the MCM complex (mini chromosome maintenance proteins). Seems to phosphorylate critical substrates that regulate the G1/S phase transition and/or DNA replication. Can phosphorylate MCM2 and MCM3.

Research Area

Image Data



Western blot analysis of extracts from HeLa cells, using CDC7 antibody.

Note

For research use only.