

Product Name: Cdc16/APC6 (16I13) Rabbit Monoclonal Antibody
Catalog #: AMRe08499

Summary

Production Name	Cdc16/APC6 (16I13) Rabbit Monoclonal Antibody
Description	Rabbit Monoclonal Antibody
Host	Rabbit
Application	WB,IP
Reactivity	Human,Mouse,Rat

Performance

Conjugation	Unconjugated
Modification	Unmodified
Isotype	IgG
Clonality	Monoclonal
Form	Liquid
Storage	Store at 4°C short term. Aliquot and store at -20°C long term. Avoid freeze/thaw cycles. Rabbit IgG in phosphate buffered saline , pH 7.4, 150mM NaCl, 0.02% New type
Buffer	preservative N and 50% glycerol. Store at +4°C short term. Store at -20°C long term. Avoid freeze / thaw cycle.
Purification	Affinity purification

Immunogen

Gene Name	CDC16
Alternative Names	CDC16; ANAPC6; APC6; CDC16 homolog; Cyclosome subunit 6; CDC16Hs; CUT9;
Gene ID	8881.0
SwissProt ID	Q13042.

Application

Dilution Ratio	WB 1:1000, IP 1:20-1:50
Molecular Weight	72kDa

Product Name: Cdc16/APC6 (16I13) Rabbit Monoclonal Antibody
Catalog #: AMRe08499

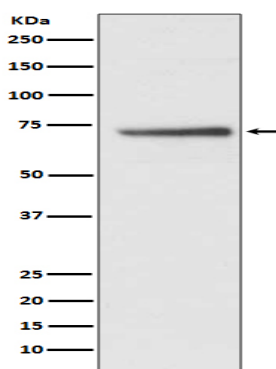


Background

Component of the anaphase promoting complex/cyclosome (APC/C), a cell cycle-regulated E3 ubiquitin ligase that controls progression through mitosis and the G1 phase of the cell cycle. Component of the anaphase promoting complex/cyclosome (APC/C), a cell cycle-regulated E3 ubiquitin ligase that controls progression through mitosis and the G1 phase of the cell cycle. The APC/C complex acts by mediating ubiquitination and subsequent degradation of target proteins: it mainly mediates the formation of 'Lys-11'-linked polyubiquitin chains and, to a lower extent, the formation of 'Lys-48'- and 'Lys-63'-linked polyubiquitin chains.

Research Area

Image Data



Western blot analysis of Cdc16/APC6 expression in HepG2 cell lysate.

Note

For research use only.