

**Product Name: C3 (4X12) Rabbit Monoclonal Antibody**  
**Catalog #: AMRe07744**



---

## Summary

<b>Production Name</b>	C3 (4X12) Rabbit Monoclonal Antibody
<b>Description</b>	Rabbit Monoclonal Antibody
<b>Host</b>	Rabbit
<b>Application</b>	WB,IHC-P,IF-P
<b>Reactivity</b>	Human,Mouse,Rat

## Performance

<b>Conjugation</b>	Unconjugated
<b>Modification</b>	Unmodified
<b>Isotype</b>	IgG
<b>Clonality</b>	Monoclonal
<b>Form</b>	Liquid
<b>Storage</b>	Store at 4°C short term. Aliquot and store at -20°C long term. Avoid freeze/thaw cycles.
<b>Buffer</b>	Rabbit IgG in phosphate buffered saline , pH 7.4, 150mM NaCl, 0.02% New type preservative N and 50% glycerol. Store at +4°C short term. Store at -20°C long term. Avoid freeze / thaw cycle.
<b>Purification</b>	Affinity purification

## Immunogen

<b>Gene Name</b>	C3
<b>Alternative Names</b>	AHUS5; ARMD9; ASP; Complement C3; Complement factor 3; CPAMD1; HEL S 62p;
<b>Gene ID</b>	718.0
<b>SwissProt ID</b>	P01024.

## Application

<b>Dilution Ratio</b>	WB 1:1000, IHC-P/IF-P 1:200
<b>Molecular Weight</b>	187kDa

## Background

---

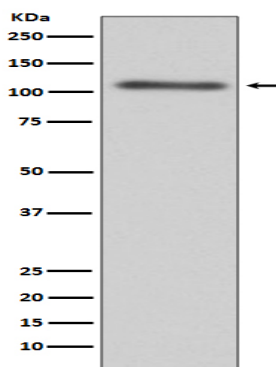
**Product Name: C3 (4X12) Rabbit Monoclonal Antibody**  
**Catalog #: AMRe07744**



Plays a central role in the activation of the complement system. Its processing by C3 convertase is the central reaction in both classical and alternative complement pathways. After activation C3b can bind covalently, via its reactive thioester, to cell surface carbohydrates or immune aggregates. C3 plays a central role in the activation of the complement system. Its processing by C3 convertase is the central reaction in both classical and alternative complement pathways. After activation C3b can bind covalently, via its reactive thioester, to cell surface carbohydrates or immune aggregates. [C3-beta-c]: Acts as a chemoattractant for neutrophils in chronic inflammation.

## Research Area

## Image Data



Western blot analysis of C3 expression in HepG2 cell lysate.

## Note

For research use only.