

Product Name: 14-3-3 epsilon (1W4) Rabbit Monoclonal Antibody
Catalog #: AMRe06274

Summary

Production Name	14-3-3 epsilon (1W4) Rabbit Monoclonal Antibody
Description	Rabbit Monoclonal Antibody
Host	Rabbit
Application	WB,ICC/IF,FC
Reactivity	Human,Mouse,Rat

Performance

Conjugation	Unconjugated
Modification	Unmodified
Isotype	IgG
Clonality	Monoclonal
Form	Liquid
Storage	Store at 4°C short term. Aliquot and store at -20°C long term. Avoid freeze/thaw cycles. Rabbit IgG in phosphate buffered saline , pH 7.4, 150mM NaCl, 0.02% New type
Buffer	preservative N and 50% glycerol. Store at +4°C short term. Store at -20°C long term. Avoid freeze / thaw cycle.
Purification	Affinity purification

Immunogen

Gene Name	YWHAE
Alternative Names	14-3-3E; 143E; KCIP-1; MDCR; Protein kinase C inhibitor protein-1; YWHAE;
Gene ID	7531.0
SwissProt ID	P62258.

Application

Dilution Ratio	WB 1:1000-1:5000, ICC/IF 1:100-1:200, FCM 1:100-1:1000
Molecular Weight	29kDa

Product Name: 14-3-3 epsilon (1W4) Rabbit Monoclonal Antibody
Catalog #: AMRe06274

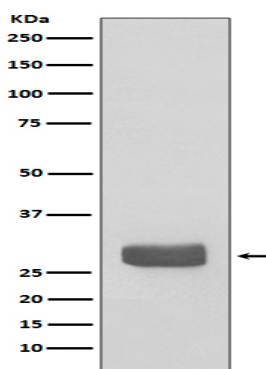


Background

Adapter protein implicated in the regulation of a large spectrum of both general and specialized signaling pathway. Binds to a large number of partners, usually by recognition of a phosphoserine or phosphothreonine motif. Binding generally results in the modulation of the activity of the binding partner. Adapter protein implicated in the regulation of a large spectrum of both general and specialized signaling pathways. Binds to a large number of partners, usually by recognition of a phosphoserine or phosphothreonine motif. Binding generally results in the modulation of the activity of the binding partner (By similarity). Positively regulates phosphorylated protein HSF1 nuclear export to the cytoplasm (PubMed:12917326).

Research Area

Image Data



Western blot analysis of 14-3-3 epsilon expression in 293T cell lysate.

Note

For research use only.