

**Product Name: Phospho-POLR2A (S5) (15M1) Rabbit
Monoclonal Antibody
Catalog #: AMRe05980**



Summary

Production Name	Phospho-POLR2A (S5) (15M1) Rabbit Monoclonal Antibody
Description	Rabbit Monoclonal Antibody
Host	Rabbit
Application	WB,IHC-P,ICC/IF,FC,IP,IF-P
Reactivity	Human,Mouse,Rat

Performance

Conjugation	Unconjugated
Modification	Phospho Antibody
Isotype	IgG
Clonality	Monoclonal
Form	Liquid
Storage	Store at 4°C short term. Aliquot and store at -20°C long term. Avoid freeze/thaw cycles. Rabbit IgG in phosphate buffered saline , pH 7.4, 150mM NaCl, 0.02% New type
Buffer	preservative N and 50% glycerol. Store at +4°C short term. Store at -20°C long term. Avoid freeze / thaw cycle.
Purification	Affinity purification

Immunogen

Gene Name	POLR2A
Alternative Names	POLR2A; POLR2; RNA polymerase II CTD repeat YSPTSPS;
Gene ID	5430.0
SwissProt ID	P24928.

Application

Dilution Ratio	WB 1:1000, IHC-P/IF-P 1:200-1:500, ICC/IF 1:100-1:200, FCM 1:20, IP 1:20
Molecular Weight	217kDa

**Product Name: Phospho-POLR2A (S5) (15M1) Rabbit
Monoclonal Antibody
Catalog #: AMRe05980**

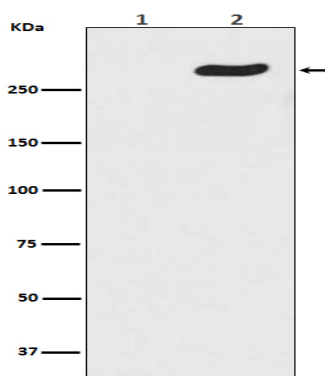


Background

Acts as an RNA-dependent RNA polymerase when associated with small delta antigen of Hepatitis delta virus, acting both as a replicate and transcriptase for the viral RNA circular genome. DNA-dependent RNA polymerase catalyzes the transcription of DNA into RNA using the four ribonucleoside triphosphates as substrates. Largest and catalytic component of RNA polymerase II which synthesizes mRNA precursors and many functional non-coding RNAs. Forms the polymerase active center together with the second largest subunit. Pol II is the central component of the basal RNA polymerase II transcription machinery. It is composed of mobile elements that move relative to each other. RPB1 is part of the core element with the central large cleft, the clamp element that moves to open and close the cleft and the jaws that are thought to grab the incoming DNA template. At the start of transcription, a single-stranded DNA template strand of the promoter is positioned within the central active site cleft of Pol II. A bridging helix emanates from RPB1 and crosses the cleft near the catalytic site and is thought to promote translocation of Pol II by acting as a ratchet that moves the RNA-DNA hybrid through the active site by switching from straight to bent conformations at each step of nucleotide addition. During transcription elongation, Pol II moves on the template as the transcript elongates. Elongation is influenced by the phosphorylation status of the C-terminal domain (CTD) of Pol II largest subunit (RPB1), which serves as a platform for assembly of factors that regulate transcription initiation, elongation, termination and mRNA processing. Regulation of gene expression levels depends on the balance between methylation and acetylation levels of the CTD- lysines (By similarity). Initiation or early elongation steps of transcription of growth-factors-induced immediate early genes are regulated by the acetylation status of the CTD (PubMed: <http://www.uniprot.org/citations/24207025> target="_blank">24207025). Methylation and dimethylation have a repressive effect on target genes expression (By similarity).

Research Area

Image Data



Western blot analysis of Phospho-POLR2A (S5) expression in (1) HeLa cell lysate treated with Lambda Phosphatase; (2) HeLa cell lysate.

**Product Name: Phospho-POLR2A (S5) (15M1) Rabbit
Monoclonal Antibody
Catalog #: AMRe05980**



Note

For research use only.