

Summary

Production Name	STAT3 Rabbit Monoclonal Antibody
Description	Rabbit Monoclonal antibody
Host	Rabbit
Application	WB,IHC-P,ICC/IF
Reactivity	Human,Mouse,Rat

Performance

Conjugation	Unconjugated
Modification	Unmodified
Isotype	IgG
Clonality	Monoclonal
Form	Liquid
Storage	Store at 4°C short term. Aliquot and store at -20°C long term. Avoid freeze/thaw cycles.
Buffer	Rabbit IgG in phosphate buffered saline , pH 7.4, 150mM NaCl, 0.02% sodium azide and 50% glycerol.
Purification	Affinity Chromatography

Immunogen

Gene Name	STAT3
Alternative Names	STAT3; APRF; Signal transducer and activator of transcription 3; Acute-phase response factor
Gene ID	6774
SwissProt ID	P40763.

Application

Dilution Ratio	WB: 1:500-1:1000 IHC: 1:50-1:100 IF: 1:50-1:200
Molecular Weight	Calculated MW: 88 kDa; Observed MW: 88 kDa

Product Name: STAT3 Rabbit Monoclonal Antibody
Catalog #: AMRe04144



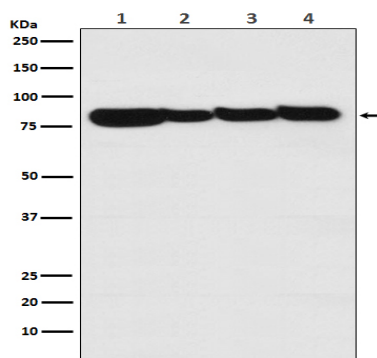
Background

The protein encoded by this gene is a member of the STAT protein family. In response to cytokines and growth factors, STAT family members are phosphorylated by the receptor associated kinases, and then form homo- or heterodimers that translocate to the cell nucleus where they act as transcription activators.

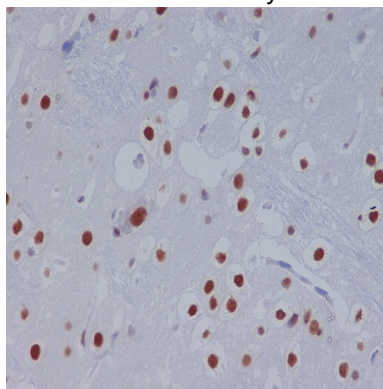
Research Area

Signal Transduction

Image Data

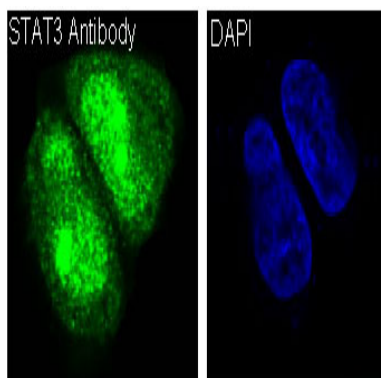


Western blot analysis of STAT3 in (1) A431 lysates; (2) Human liver lysates; (3) mouse heart lysates; (4) rat brain lysates using STAT3 antibody.



Immunohistochemistry analysis of paraffin-embedded rat brain using STAT3 antibody. High-pressure and temperature Sodium Citrate pH 6.0 was used for antigen retrieval.

Product Name: STAT3 Rabbit Monoclonal Antibody
Catalog #: AMRe04144



Immunofluorescence analysis of STAT3 in HeLa treated with IFN α using STAT3 antibody.

Note

For research use only.