

## Summary

<b>Production Name</b>	EGFR Rabbit Monoclonal Antibody
<b>Description</b>	Rabbit Monoclonal antibody
<b>Host</b>	Rabbit
<b>Application</b>	WB, ICC/IF, IP
<b>Reactivity</b>	Human, Mouse

## Performance

<b>Conjugation</b>	Unconjugated
<b>Modification</b>	Unmodified
<b>Isotype</b>	IgG
<b>Clonality</b>	Monoclonal
<b>Form</b>	Liquid
<b>Storage</b>	Store at 4°C short term. Aliquot and store at -20°C long term. Avoid freeze/thaw cycles.
<b>Buffer</b>	50mM Tris-Glycine(pH 7.4), 0.15M NaCl, 40% Glycerol, 0.01% Sodium azide and 0.05% BSA
<b>Purification</b>	Affinity Purification

## Immunogen

<b>Gene Name</b>	EGFR
<b>Alternative Names</b>	EGFR; ERBB; ERBB1; HER1; Epidermal growth factor receptor; Proto-oncogene c-ErbB-1; Receptor tyrosine-protein kinase erbB-1
<b>Gene ID</b>	1956
<b>SwissProt ID</b>	P00533.

## Application

<b>Dilution Ratio</b>	WB: 1:500-1:1000 IF: 1:50-1:200 IP: 1:20
<b>Molecular Weight</b>	Calculated MW: 134 kDa; Observed MW: 175 kDa

**Product Name: EGFR Rabbit Monoclonal Antibody**  
**Catalog #: AMRe04137**



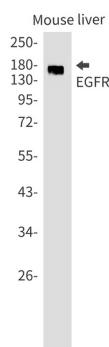
## Background

EGFR is a receptor tyrosine kinase. Receptor for epidermal growth factor (EGF) and related growth factors including TGF- $\alpha$ , amphiregulin, betacellulin, heparin-binding EGF-like growth factor, GP30 and vaccinia virus growth factor. Is involved in the control of cell growth and differentiation. . A single-pass transmembrane tyrosine kinase. Ligand binding to this receptor results in receptor dimerization, autophosphorylation (in trans), activation of various downstream signaling molecules and lysosomal degradation.

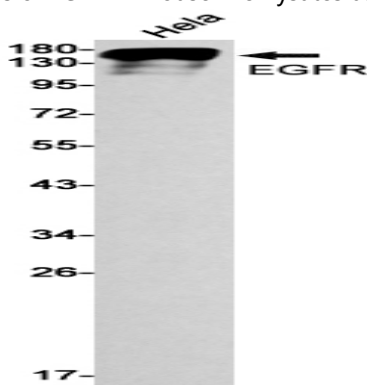
## Research Area

Signal Transduction

## Image Data



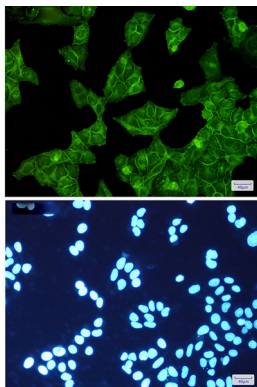
Western blot analysis of EGFR in mouse liver lysates using EGFR antibody.



Western blot analysis of EGFR in HeLa lysates using EGFR antibody.

**Product Name: EGFR Rabbit Monoclonal Antibody**  
**Catalog #: AMRe04137**

---



Immunocytochemistry analysis of EGFR(green) in HeLa using EGFR antibody, and DAPI(blue)

### **Note**

For research use only.