

Product Name: MBD2 Rabbit Monoclonal antibody
Catalog #: AMRe04089



Summary

Production Name	MBD2 Rabbit Monoclonal antibody
Description	Recombinant Rabbit Monoclonal antibody
Host	Rabbit
Application	WB,IHC-F,IHC-P,ICC/IF,IP
Reactivity	Human,Mouse,Rat

Performance

Conjugation	Unconjugated
Modification	Unmodified
Isotype	IgG
Clonality	Monoclonal Antibody
Form	Liquid
Storage	Store at 4°C short term. Aliquot and store at -20°C long term. Avoid freeze/thaw cycles.
Buffer	50mM Tris-Glycine(pH 7.4), 0.15M NaCl, 40% Glycerol, 0.01% Sodium azide and 0.05% BSA
Purification	Affinity Purified

Immunogen

Gene Name	MBD2
Alternative Names	Demethylase; DMTase; Mbd2; MBD2a
Gene ID	8932
SwissProt ID	Q9UBB5.

Application

Dilution Ratio	WB: 1:500-1:1000 IHC: 1:50-1:100 IF: 1:50-1:200 IP: 1:20
Molecular Weight	Calculated MW: 43 kDa; Observed MW: 29,43 kDa

Background

Product Name: MBD2 Rabbit Monoclonal antibody
Catalog #: AMRe04089



Binds CpG islands in promoters where the DNA is methylated at position 5 of cytosine within CpG dinucleotides. Binds hemimethylated DNA as well. Recruits histone deacetylases and DNA methyltransferases.

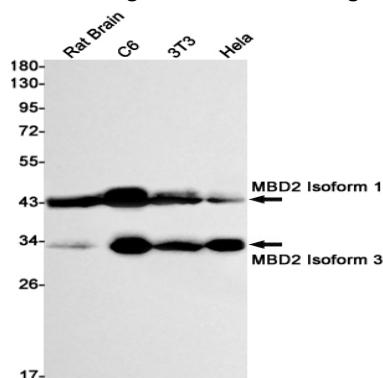
Research Area

Epigenetics and Nuclear Signaling

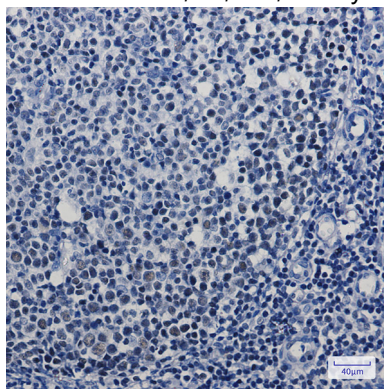
Image Data



Immunocytochemistry analysis of MBD2 (green) in HL-60 using MBD2 antibody, and DAPI (blue).



Western blot analysis of MBD2 in rat Brain, C6, 3T3, HeLa lysates using MBD2 antibody.



Immunohistochemistry analysis of paraffin-embedded Human tonsil using MBD2 antibody. High-pressure and temperature Sodium Citrate pH 6.0 was used for antigen retrieval.

Product Name: MBD2 Rabbit Monoclonal antibody
Catalog #: AMRe04089



Note

For research use only.